



**INDUSTRY
& MEDICAL**

**INFECTION
CONTROL AND
RISK PREVENTION
SOLUTIONS**

CATALOGUE

WWW.MEDICOM-EU.COM



PRIDE IN PROTECTION

CONTENTS

1.	Our story	04
2.	Medicom worldwide	06
3.	Our CSR commitment	08
4.	Face protection	12
5.	Hand Protection	30
6.	Body Protection	48
7.	Head protection	72
8.	Foot protection	82
9.	Personal and medical care	94
10.	Disinfection & technical wipes	102
11.	Kits & accessories	110

OUR STORY



RONALD REUBEN
Founder and Executive Chairman

Founded in 1988 by Ronald Reuben, the Medicom® Group is one of the world's leading manufacturers and distributors of high-quality, single-use, and preventive infection control products, primarily serving the medical, dental, and industrial markets.

Operating in over 95 countries, Medicom has been a key player in the fight against epidemics and pandemics since its inception, including HIV, avian flu, SARS, H1N1, Ebola virus, and COVID-19.



VISION

Medicom® is the B2B partner and **expert that develops, manufactures, and sells solutions** to protect against and prevent contamination and infections.



MISSION

Medicom® **protects people and mitigates risks** by listening, responding, and anticipating customer needs, creating value through services and solutions that provide peace of mind and exceed customer expectations.



VALUES

- . Responsibility
- . Customer Orientation
- . Team Spirit
- . Empathy
- . Sustainable Development

OVER 100 YEARS OF EXPERIENCE IN EUROPE

- 1921** **INSTALLATION OF THE FACTORY IN ANGERS**, specializing in the production of cigarette paper.
- 1972** **THE FIRST PAPER MASK.** Kolmi® manufactures Europe's first paper mask. A revolution in medical equipment!
- 1975** **THE FIRST NON-WOVEN MASK.** Kolmi® designs the first single-use, non-woven mask combining protection and comfort.
- 1988** **FOUNDING OF THE MEDICOM® GROUP**
- 2003** **CREATION OF THE HOPEN BRAND**, specializing in single-use personal protective equipment.
- 2010** **CREATION OF KOLMI HOPEN®** to provide comprehensive head-to-toe protective solutions.
- 2011** **KOLMI HOPEN® JOINS THE MEDICOM® GROUP**, a globally recognized Canadian specialist in dental equipment.
- 2012** **LEADING FRENCH MANUFACTURER OF MEDICAL MASKS.** Kolmi® becomes the first manufacturer to supply surgical masks for operating rooms across France.
- 2020** **NEW PARTNERSHIP WITH LOSER GMBH**, to expand our presence in the European dental sector with the acquisition of LOSER GMBH.
THE COVID-19 CRISIS: a major turning point with a sharp increase in production to meet all demands.
- 2021** **CREATION OF MANIKHEIR**, the first nitrile glove manufacturing facility in France. **Awarded EcoVadis silver medal**, marking the beginnings of a recognized CSR initiative.
- 2022** **STRATEGIC ALLIANCE WITH WEESAFE.** Acquisition of WeeSafe, a recognized leader in body protection through its Category III PPE garments.
- 2023** **NEW IDENTITY!** KOLMI HOPEN® continues its mission to create a European entity closely linked to the group, rebranding as Medicom SAS for the Medical/Industry sector and Medicom GMBH for the Dental sector.
- 2024** **INAUGURATION of the 4 ManiKHeir production lines**, representing a capacity of over 900 million gloves per year. **Awarded EcoVadis gold medal.**

MEDICOM WORLDWIDE

-  Global headquarters
-  Manufacturing plant
-  Sales office



±1500
EMPLOYEES

13
FACTORIES

CSR COMMITMENT

In line with Medicom's values for several years, we have chosen to structure our societal approach based on the fundamental principles of ISO 26000.

This is reflected in the management of our environmental impacts, the performance of our teams, the quality of our products, and our commitment to our customers and partners in compliance with current standards and regulations.



Our mission is based on commitments that demonstrate our intention to take responsibility for sustainable development.



OUR AREAS

- **Ensure** a safe, motivating, and sustainable working **environment** for our employees.
- Introduce innovative and high-quality products to the market while **minimizing their impacts**.
- **Have a positive external influence** on the social, economic, and environmental challenges of tomorrow.
- Promote the development of a **sustainable value chain**.



Since 2023, we have also been committed to **the United Nations Global Compact's** corporate social responsibility initiative by supporting its ten principles on Human Rights, labor standards, the environment, and the fight against corruption.



1 RESOURCES, PROCESSING AND SUPPLY

Responsible Use of Raw Materials

We carefully select raw materials to ensure they are environmentally friendly, without compromising the quality and durability of our products. **Some of our products are made from recycled materials, thereby reducing our consumption of fossil resources.**

Low-Impact Transformation Processes

When selecting our raw material and finished product suppliers, we prioritize processes that are energy and water-efficient.

A Network of Committed Partners

We collaborate with both local and international suppliers, ensuring they share our values regarding Human Rights and environmental protection. **We encourage short supply chains to limit our carbon footprint, and our long-term relationships with our partners ensure a stable and ethical supply.**

2 MANUFACTURING, DISTRIBUTION AND USE

Optimization of Our Production Chains

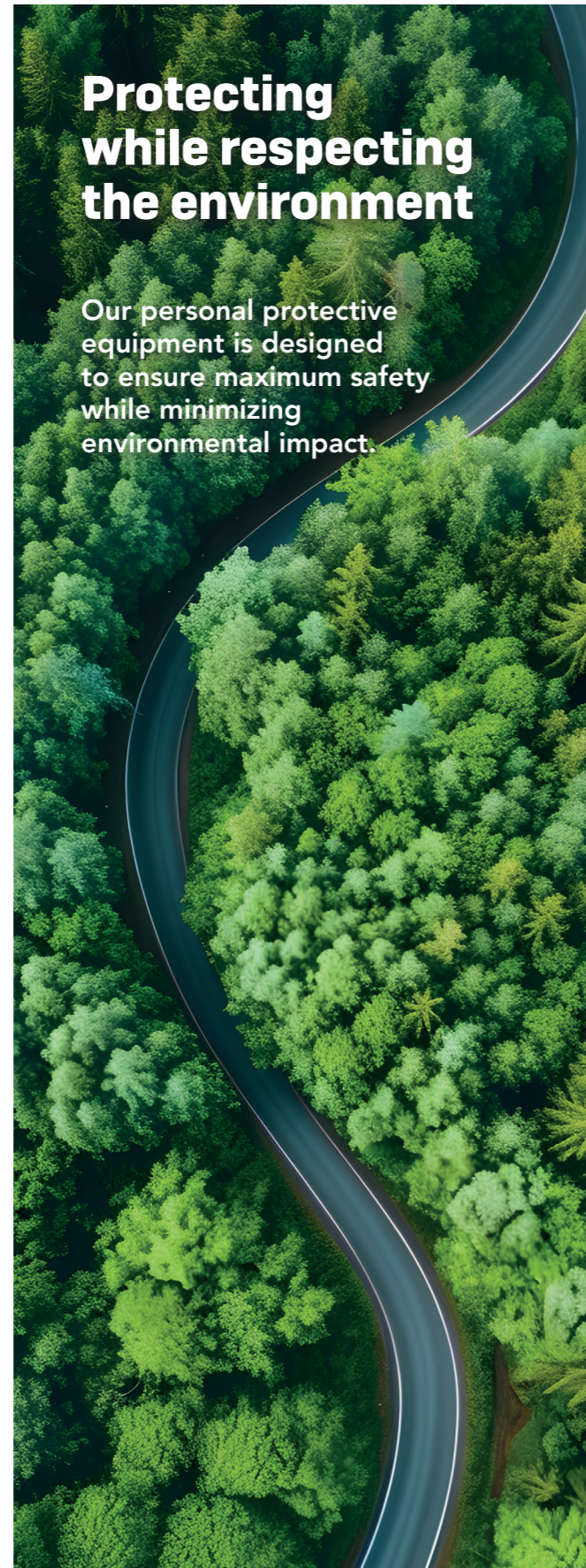
Our manufacturing sites are committed to a continuous improvement approach to reduce the environmental impact of production processes and working conditions.

Optimized Logistics and Transport

We are rethinking our distribution systems to limit the carbon footprint associated with transporting our products: Consolidating shipments to reduce the number of trips and using low CO2 emission transport methods.

Sustainable Packaging

Reduction of plastic packaging, use of recyclable materials, and fibers from sustainably managed forests for our products made in France, with optimized printing designs to reduce resource use.



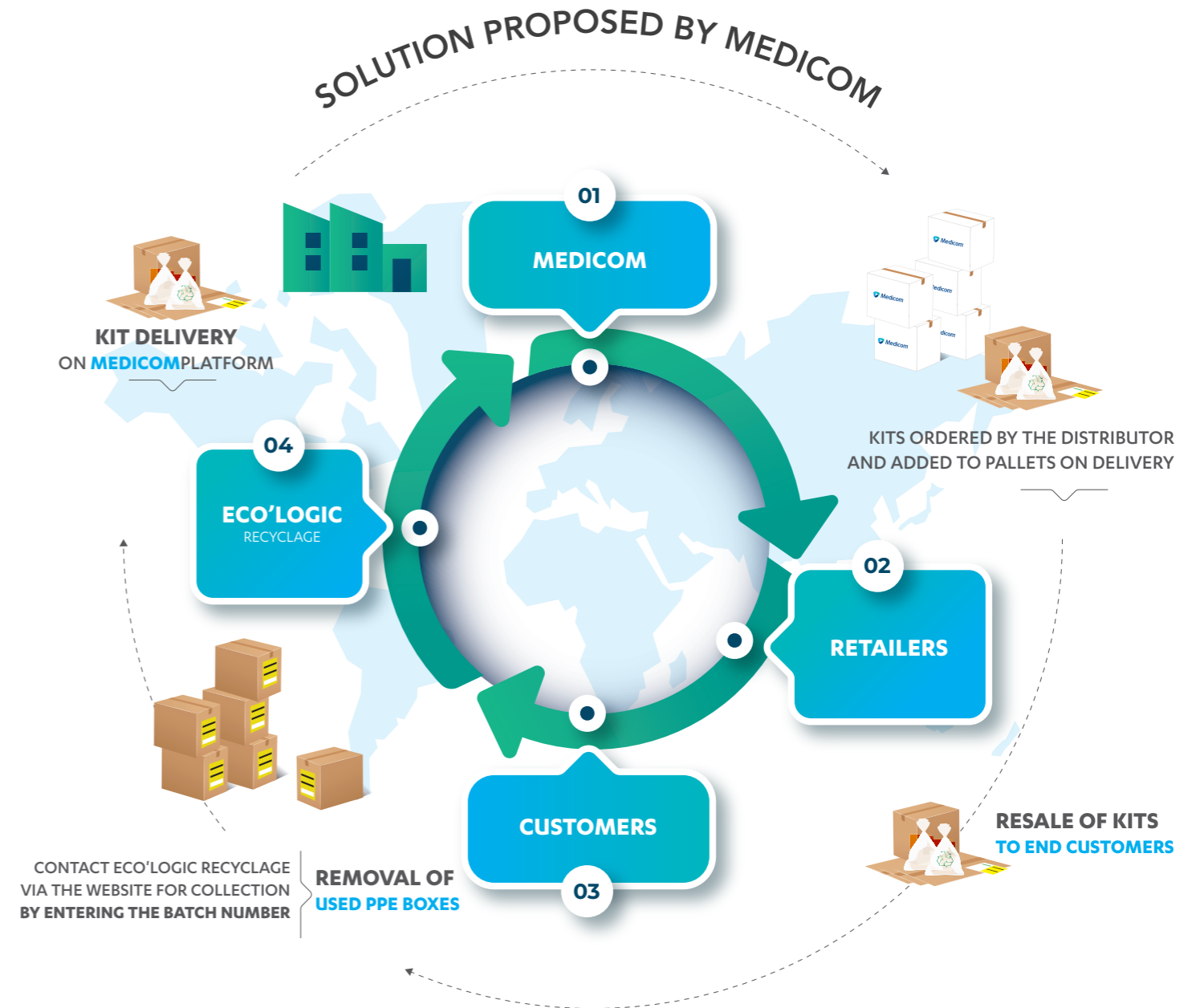
RECYCLED MATERIALS

Concerned with preserving fossil energies and reducing the carbon impact of our productions, we incorporate recycled polypropylene into the design of our FFP masks, cleanroom masks, and shoe covers.

We use various processes, including the "Mass Balance" process, which tracks the flow of raw materials and recycled products throughout the value chain, and the PIR (Post-Industrial Recycling) process.

3 END OF LIFE OF PRODUCTS AND RECYCLING

Our goal is to promote a circular economy by committing to develop recycling and recovery solutions. We have partnered with Eco'Logic Recyclage to offer a **MADE IN FRANCE** solution for recycling single-use, flexible PPE made of polypropylene.



01

FACE PROTECTION

Medical masks	14
Respiratory protective masks (FFP)	24
Clean room & controlled environments face masks	28



MEDICAL MASKS

Definition

1. They protect the environment from the disease-causing agents transmitted by droplets emitted from the wearer's mouth and nose.
2. They protect healthcare professionals from projections of potentially contaminated body fluids (Type IIR).



Regulations

EN 14683:2019+AC:2019 - REQUIREMENTS

It defines the performance requirements for masks for medical use, taking into account various criteria that guarantee the quality of the mask and the safety of the wearer's environment:

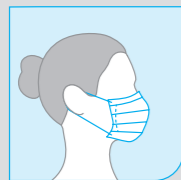
- | Microbial cleanliness (Bioburden)
- | Bacterial filtration efficiency (BFE)
- | Breathability (Delta P)
- | Resistance to body fluid projections (Type IIR only)
- | Biocompatibility (Bioburden)

FURTHER TESTS, NOT REQUIRED BY STANDARD EN 14683

To guarantee further protection for users, Kolmi® masks are tested for viruses and submicron particles using two tests:

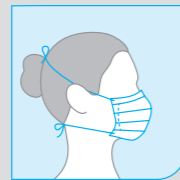
- | Viral filtration efficiency (VFE)
- | Filtration efficiency for particles of 0.1 µm (PFE)

DIFFERENT TYPES OF FASTENERS:



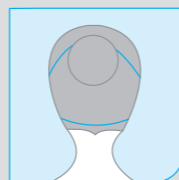
ELASTIC EARLOOPS

This is the most common type of fastener. Easy to put on and take off.



TIES-ON

This is the most comfortable type of fastener for longer surgical procedures.



ELASTIC HEADLOOPS

This system combines the ease-of-use of traditional earloops with the comfort of ties that are placed behind the head and neck.

Our Product Range

We offer a complete range of single-use medical masks to meet all needs: with ties-on or elastic, suitable for various sectors.

Kolmi®
Vitals

Kolmi®
Softex

Kolmi®
Feeldry

Our masks are made from the highest quality raw materials sourced from the best global non-woven manufacturers. These raw materials, combined with Kolmi's technological expertise, ensure that our masks provide excellent breathability and absolute comfort while maintaining a high level of protection.

THE KOLMI® HEM
The top and bottom of our Softex and Feeldry elastic masks are lined with a hem for the wearer's comfort and to enhance their durability.

INTEGRATED NOSE PIECE
The integrated nose piece allows our masks to fit perfectly to various face shapes.

EXCEPTIONAL BREATHABILITY
Our masks are designed to provide excellent breathability and exceptional comfort for everyday use. Their performance exceeds the requirements of the EN 14683 standard.

smile

THE KOLMI® SMILE
The Kolmi® smile is designed to help the mask fit comfortably on all face shapes, thereby enhancing breathability.

origami

KOLMI® ORIGAMI FOLD
The omega-shaped folding allows the mask to pre-form to the wearer's face. The fold also ensures a proper fit and comfort for the wearer.

BACTERIAL FILTRATION EFFICIENCY
Our medical masks provide exceptional bacterial filtration efficiency.

SOFT RAW MATERIALS
Our masks provide unmatched comfort for wearers with sensitive skin. The face piece, earloops, head-loops, and ties-on are made from soft materials. To enhance this comfort, our masks are guaranteed latex-free.

NEW
DIGITAL INSTRUCTIONS ON THE PACKAGING

SCAN ME



CONTROLLED ENVIRONMENT ZONE

Our tie-on masks and headloop or FFP masks, used in operating rooms or controlled environments, are manufactured in a Controlled Environment Zone. Our controlled environment contributes to the continuous microbial cleanliness of our masks and ensures their immediate operability for our customers.



MEDICAL MASK WITH OPTIONS

Technologies for the protection of frontline workers.



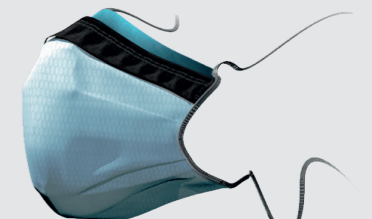
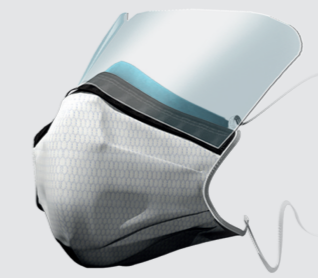
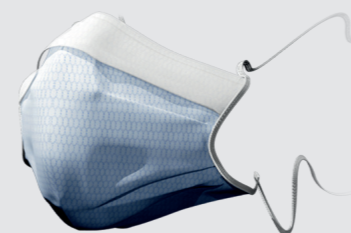
ANTI-FOG
Prevents the formation of fog on glasses.



ANTI-SPLASH
With an integrated visor in the mask, it provides facial protection against biological liquid splashes.



ANTI-GLARE
Reduces the risk of glare in high-intensity light environments and minimizes mask reflection for glasses wearers.



MEDICAL MASK

Kolmi®
Softex

- The Kolmi® Softex range is made of soft, non-irritating materials, ensuring lasting comfort and protection for the wearer.
- Certified as a Class I Medical Device according to the EN14683:2019+AC:2019 standard.
- Tested according to BFE, VFE, and PFE standards.
- Made in France.

TYPE IIR EARLOOPS

MADE IN FRANCE



Kolmi®
Softex

MD Class I

REF.			
M35111-30		Box	16 x 50 u
M35211-30			
M35511-30			

TYPE IIR EARLOOPS - WITHOUT NOSE PIECE

MADE IN FRANCE



Kolmi®
Softex

MD Class I

Without nose piece for use during MRI, scans or X-rays

REF.			
M35001SB-30		No nose bridge	16 x 50 u

TYPE IIR EARLOOPS - VISOR

MADE IN FRANCE



Kolmi®
Softex

MD Class I

Polyester visor with anti-fog treatment on both sides

REF.				
M35111V-30		Visor	Box	4 x 25 u

TYPE II EARLOOPS

MADE IN FRANCE



Kolmi®
Softex

MD Class I

REF.			
M14301-30		Box	16 x 60 u
M14311-30			
M14321-30			

TYPE II EARLOOPS - BULK

MADE IN FRANCE



Kolmi®
Softex

MD Class I

REF.			
M14311-30-2000		Bag	1 x 2000 u

TYPE IIR TIE-ON

MADE IN FRANCE



Kolmi®
Softex

MD Class I

REF.			
M31101-30		Box	6 x 40 u
M31201-30			

TYPE II TIES-ON

MADE IN FRANCE



Kolmi®
Softex

MD Class I

REF.			
M21101-30		Box	6 x 50 u

TYPE II TIES-ON - WITH OPTIONS

MADE IN FRANCE



Kolmi®
Softex

MD Class I

REF.			
M21101F-30		Anti fog strip	Box 6 x 50 u
M21101M-30		Foam strip	

TYPE II EARLOOPS - CHILDREN 5-12 YEARS

MADE IN FRANCE



Kolmi®
Softex Kids

MD Class I

Suitable for children's faces aged 5 to 12 years

REF.			
M95121-30		Box	12 x 50 u

TYPE II EARLOOPS - CHILDREN 1-5 YEARS

MADE IN FRANCE



Kolmi®
Softex Kids

MD Class I

Suitable for children's faces aged 1 to 5 years

REF.			
M95241-30		Box	12 x 50 u



MEDICAL MASK

Kolmi®
Feeldry

- The Kolmi® Feeldry range features an ultra-absorbent inner layer, ensuring optimal and consistent comfort, even during prolonged use.
- Certified as a Class I Medical Device according to the EN14683:2019+AC:2019 standard.
- Tested according to BFE, VFE, and PFE standards.
- Made in France.

TYPE IIR TIES-ON

MADE IN FRANCE



Kolmi®
Feeldry

MD Class I

REF.			
M34001-30		Box	6 x 40 u
M34101-30			
M34201-30			

TYPE II WITH TIES - WITH OPTIONS

MADE IN FRANCE



Kolmi®
Feeldry

MD Class I

REF.			
M24101F-30		Anti fog strip	Box
M24101N-30		Anti glare strip	
			6 x 50 u

TYPE IIR TIES-ON - WITH OPTIONS

MADE IN FRANCE



Kolmi®
Feeldry

MD Class I

REF.			
M34101F-30		Anti fog strip	Box
M34101V-30		Visor	Box
			6 x 40 u
			4 x 25 u

TYPE II TIES-ON

MADE IN FRANCE



Kolmi®
Feeldry

MD Class I

REF.			
M24101-30		Box	6 x 50 u

Kolmi® Vitals

**A RESPONSIBLE
& SUSTAINABLE
CHOICE**

-35%
REDUCED CARBON
FOOTPRINT VS. MASK
IMPORTED
FROM ASIA*

MADE IN FRANCE

Available in ties-on or earloops versions



Manufactured from high-quality materials that enhance comfort and breathability, **the masks from the Kolmi® Vitals range are designed to reduce their carbon footprint through two criteria:**

- Reducing the amount of material used without compromising user comfort and protection.
- Sourcing all mask components exclusively from French suppliers.

MEDICAL MASK

Kolmi® Vitals

- The Kolmi® Vitals range combines comfort, safety, and performance while meeting the needs of daily use.
- Certified as a Class I Medical Device according to the EN14683:2019+AC:2019 standard.
- Tested according to BFE, VFE, and PFE standards.
- Made in France.

TYPE IIR EARLOOPS

MADE IN FRANCE



Kolmi®
Vitals

MD Class I

REF.			
M36101-40		Box	16 x 50 u

TYPE II EARLOOPS

MADE IN FRANCE



Kolmi®
Vitals

MD Class I

REF.			
M13101-40		Box	16 x 60 u

TYPE IIR TIE-ON

MADE IN FRANCE



Kolmi®
Vitals

MD Class I

REF.			
M33101-40		Box	6 x 50 u

RESPIRATORY PROTECTIVE MASKS (FFP)

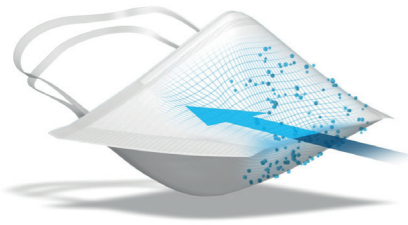
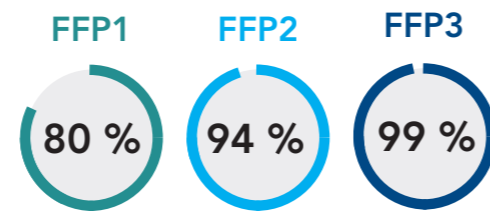
Definition

A respiratory protective mask is a Category III Personal Protective Equipment (PPE) that covers the mouth, nose, and chin. Also known as FFP masks (Filtering FacePiece), they protect the wearer from inhaling droplets and airborne particles that can carry infectious agents.

The role of the respiratory protective mask:

- It protects the wearer from airborne particles.
- There are three levels of filtration efficiency for airborne particles.
- Standard EN 149:2001+A1:2009
- Regulation EU 2016/425

Minimum filtration of FFP masks:



TOTAL INWARD LEAKAGE TEST

	MAXIMUM LEAKAGE LEVEL	
	*	**
FFP1	≤ 22 %	≤ 25 %
FFP2	≤ 8 %	≤ 11 %
FFP3	≤ 2 %	≤ 5 %

BACTERIA AND VIRUSES
DROPLETS PROJECTIONS

The test measures inward leakages from the sealing joint, valve and filter medium

FILTER MATERIAL PENETRATION TEST

	TEST WITH SODIUM CHLORIDE 95 L/MIN	TEST WITH PARAFFIN OIL 95 L/MIN
	FFP1	≤ 20 %
FFP2	≤ 6 %	≤ 6 %
FFP3	≤ 1 %	≤ 1 %

The test measures the % of solid (sodium chloride) or liquid (paraffin oil) particles that penetrate the mask

BREATHING RESISTANCE TEST

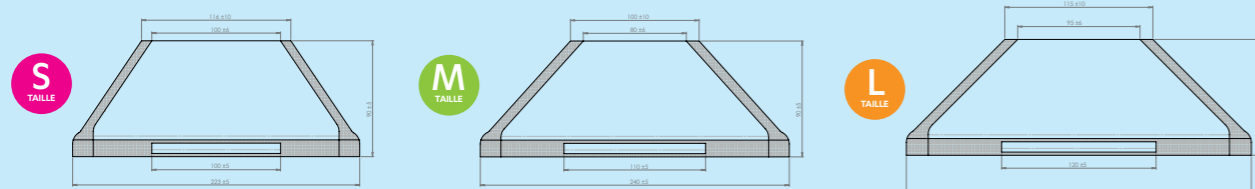
	INHALATION		EXHALATION
	30 L/MIN	95 L/MIN	160 L/MIN
FFP1	≤ 0,6	≤ 2,1	≤ 3
FFP2	≤ 0,7	≤ 2,4	≤ 3
FFP3	≤ 1	≤ 3	≤ 3

The test measures the maximum permitted resistance (mbar)

* results for at least 8 of the 10 arithmetic averages for each wearer
** results for at least 46 of the 50 individual exercise results



AVAILABLE IN 3 SIZES:



MAIN AREAS OF USE:

PROTECTION AGAINST HAZARDOUS INFECTIOUS DISEASES in accordance with national recommendations in force

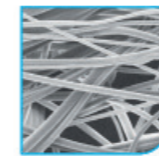
OUR RANGE AND MAIN APPLICATIONS

COMFORT & PROTECTION

Our FFP masks feature knitted cross-elastic straps that are ultrasonically welded to ensure the best possible fit. Easy to put on, they are comfortable to wear for extended periods of use.

EXCELLENT FIT

Our FFP masks are available in three sizes* and feature a flexible integrated nose bar to ensure the best possible fit. *According to the level of protection.



NON-WOVEN LAYERS MADE OF SPUNBOND AND MELTBLOWN

FFP masks are a blend of layers composed of Spunbond and Meltblown materials to ensure maximum protection with unmatched comfort.

SOFT RAW MATERIALS

Our respiratory protective masks are latex-free, and the inner layer is made of lightweight and soft material to provide the wearer with the best possible protection and comfort.

EXCEPTIONAL BREATHABILITY

Kolmi® FFP masks offer exceptional breathability thanks to the use of the finest raw materials on the market.



NEW DIGITAL INSTRUCTIONS ON THE PACKAGING



MASS BALANCE

Concerned about preserving fossil resources and reducing the carbon impact of our production, we incorporate recycled polypropylene into the design of our FFP masks using Mass Balance technology*.

*Mass Balance is a concept that allows for tracking the flows of raw materials and recycled products throughout the value chain.

RESPIRATORY PROTECTIVE MASKS (FFP)

Kolmi® Oxygen

- The Kolmi® Oxygen range ensures optimal comfort through the use of soft and flexible materials for a pleasant feel, even during prolonged use.
- It allows for easy breathing without compromising protection.
- Available in three sizes to fit all face shapes.
- Certified as a Class I Medical Device according to standard EN 14683:2019+AC:2019 and as Personal Protective Equipment (PPE) of Category III according to standard EN 149:2001+A1:2009.
- Entirely manufactured in France, the Kolmi® Oxygen range incorporates at least 70% recycled materials in its composition (FFP1, FFP2 & FFP3).

FFP2 NR D TYPE IIR

MADE IN FRANCE



Kolmi® Oxygen



MD Class I

PPE CAT. III

REF.				
M52214-WH-MB	S	Box	10 x 50 u	
M52214S-WH-MB				
M52014-WH-MB	M			
M52014S-WH-MB				
M52114-WH-MB	L			
M52114S-WH-MB				

FFP1 NR D TYPE IIR

MADE IN FRANCE



Kolmi® Oxygen



MD Class I

PPE CAT. III

REF.				
M51014-WH-MB	M	Box	10 x 50 u	
M51014S-WH-MB		Box		

FFP3 NR D TYPE IIR

MADE IN FRANCE



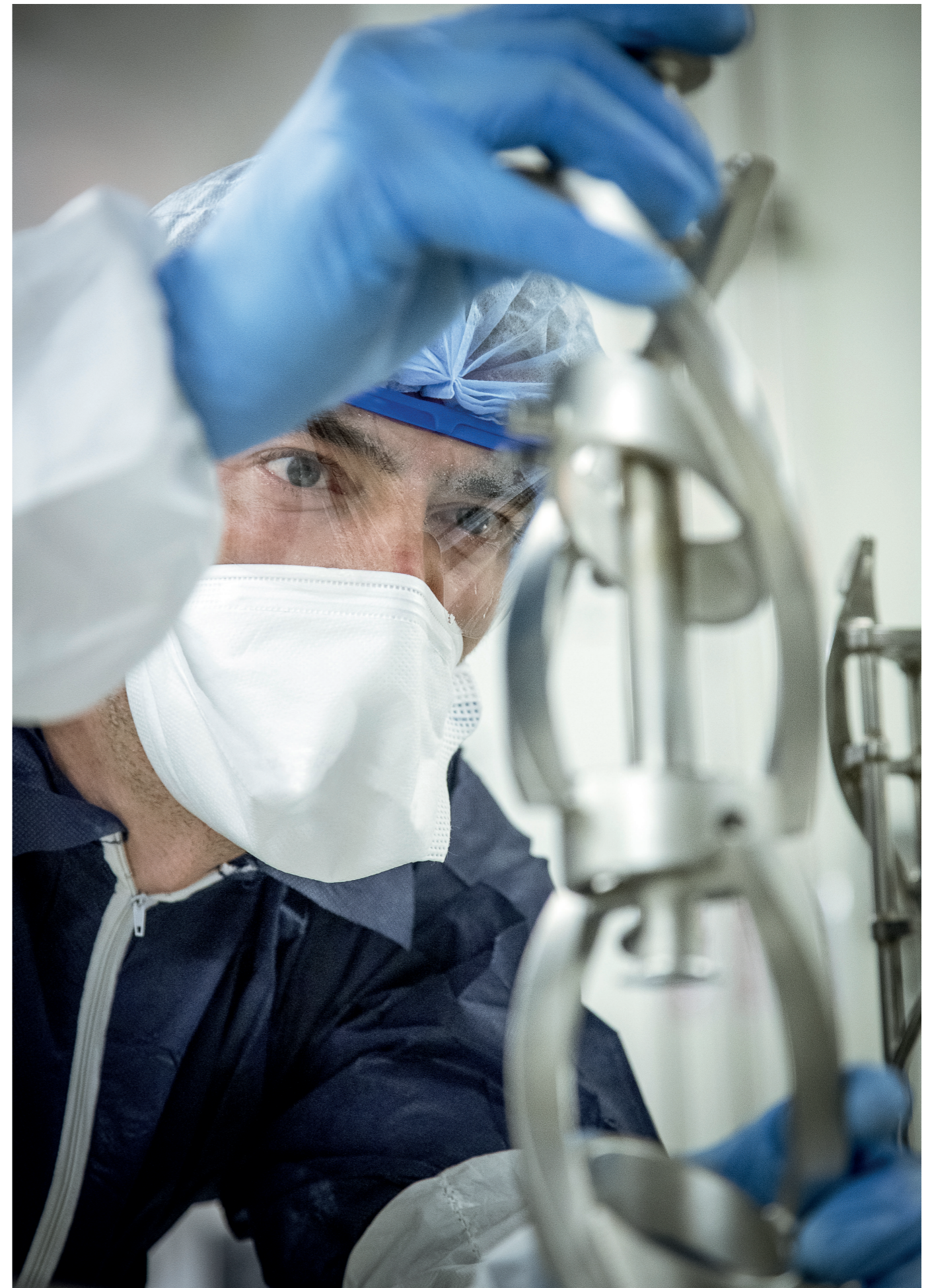
Kolmi® Oxygen



MD Class I

PPE CAT. III

REF.				
M53214-WH-MB	S	Box	10 x 50 u	
M53214S-WH-MB				
M53014-WH-MB	M			
M53014S-WH-MB				
M53114-WH-MB	L			
M53114S-WH-MB				



CLEAN ROOM & CONTROLLED ENVIRONMENTS FACE MASKS



Our Range & Main Applications

In cleanrooms, masks are primarily used to protect the environment of the wearer, but they can also provide protection for the user; this is particularly true for our FFP masks (Category III PPE).

Thanks to their very low-emission materials, the ISO AIR® range has been specifically designed to ensure user comfort and environmental protection. With filtration efficiencies exceeding 99%, ISO AIR® masks provide excellent bacterial, particulate, and viral filtration capabilities while offering comfortable breathability for the wearer.

Finally, mindful of its ecological footprint, Medicom® is the first company to develop a range of masks made from recycled materials using the Mass Balance approach.

The entire ISO AIR® range has been tested using the Helmke drum according to the IEST-RP-CC003.4 method to ensure its very low particulate emission. Thus, ISO AIR® masks can be used in environments starting from ISO 3 Grade A and above.

HEADLOOPS STERILE

MADE IN FRANCE



- Use in ISO 3 Class A environments
- Sterility Assurance Level 10
- Tested before and after sterilization, filtration performance (BFE, PFE, VFE > 99%) and comfort remain strictly identical
- Sterilization process according to ISO 11135 standard governing ETO sterilization of healthcare products
- Optimal fit and adjustment thanks to the headloops
- Excellent breathability

REF.	Icon 1	Icon 2	Icon 3	Icon 4
60.702-STE	○	210 x 90 mm	Double packed	6 x 50 u

CLEANROOM MASKS & CONTROLLED ENVIRONMENTS

HEADLOOPS NON STERILE - PLEATED SHAPE

MADE IN FRANCE



- Designed for use in ISO 3 Class C environments
- Excellent filtration efficiency (BFE, PFE, and VFE > 99%)
- Easy to put on and increased comfort thanks to headloops
- Available in two sizes : M = 210 x 90 mm / L = 230 x 90 mm

REF.	Icon 1	Icon 2	Icon 3	Icon 4
60.701-30	○	230 x 90 mm	Double packed	6 x 50 u
60.702	○	210 x 90 mm		

TIE-ON NON STERILE

MADE IN FRANCE



- Low particulate release - Tested on Helmke drum
- Excellent filtration efficiency (BFE, PFE, VFE > 99%)
- Two sizes available : M = 175 x 95mm / L = 195 x 95mm

REF.	Icon 1	Icon 2	Icon 3	Icon 4
60.720L	○	195 x 95 mm	Double packed	6 x 50 u
60.720M	○	175 x 95 mm		

HEADLOOPS NON STERILE - DUCKBILL" SHAPE

MADE IN FRANCE



- Designed for use in ISO 3 Class C environments
- Excellent filtration efficiency (BFE, PFE, and VFE > 99%)
- Great breathability thanks to the large breathing chamber
- Two sizes available : M = 240 x 100 mm / L = 268 x 115 mm

REF.	Icon 1	Icon 2	Icon 3	Icon 4
60.754L	○	268 x 115 mm	Double packed	6 x 50 u
60.754M	○	240 x 100 mm		

EARLOOPS NON STERILE

MADE IN FRANCE



- Designed for use in ISO 5 Class C environments
- Excellent filtration efficiency (BFE, PFE, and VFE > 99%)
- Soft, non-irritating elastics
- Two sizes available : M = 175 x 90 mm / L = 195 x 90 mm

REF.	Icon 1	Icon 2	Icon 3	Icon 4
60.712L	○	195 x 90 mm	Double packed	8 x 50 u
60.712M	○	175 x 90 mm		

022

HAND PROTECTION

Application Areas	32
Regulations	33
Size Guide	37
Our Range	38



GLOVES

AREAS OF USE



MEDICAL DEVICE (MD)

Barrier to contamination

EUROPEAN STANDARD
EN 455 & EN ISO 10993



PERSONAL PROTECTIVE EQUIPMENT (PPE)

Protects the user against external risks

EUROPEAN STANDARDS
EN ISO 21420, ISO EN 374-1/2/4/5, EN 16523-1,
ISO 16604, EN 421, ASTM D6978-05



HYGIENE EQUIPMENT

Protects the environment

COMPLIES WITH REQUIREMENTS
OF REGULATION (EC) 1935/2004 (FOOD CONTACT)

EUROPEAN REGULATION 2017/745 RELATING TO MEDICAL DEVICES

EUROPEAN STANDARD EN 455 SINGLE USE MEDICAL GLOVES (MD)

This series of standards applies to medical gloves, which are designed to provide a barrier between patient and user against cross-contamination. The series of standards EN 455 consists of 4 parts:

EN 455-1:2020+A2:2024 REQUIREMENTS AND TESTING FOR DETECTION OF HOLES

Gloves are subjected to water-tightness testing to detect any holes. The test is carried out on a statistical sample (taken in accordance with ISO 2859-1).

EN 455-2:2024 REQUIREMENTS AND TESTING FOR PHYSICAL PROPERTIES

The standard specifies the requirements and test methods relating to the physical properties of medical gloves, such as dimensions and breaking strength, before and after accelerated ageing.

	EXAMINATION / PROCEDURE GLOVES Latex / Nitrile	EXAMINATION / PROCEDURE GLOVES Thermo-plastic polyvinyl chloride, polyethylene
Breakage strength in Newtons (N)	≥ 6.0	≥ 3.6

EN 455-3:2023 REQUIREMENTS AND TESTING FOR BIOLOGICAL EVALUATION

The standard describes the requirements and test methods for evaluating the biological safety of medical gloves.

This involves assessing factors such as:

1. Endotoxin content (for sterile gloves only)
2. The quantity of talcum powder
3. Chemical components used in manufacturing processes - accelerators, antioxidants, biocides
4. Extractable proteins (for latex gloves)
5. Biocompatibility (in accordance with EN ISO 10993-1:2020)

EN 455-4:2009 DETERMINATION OF SHELF LIFE

The standard is used to determine the expiry date, the date beyond which the integrity of the glove's properties can no longer be guaranteed. The maximum possible shelf life for a medical glove is 5 years from the date of manufacture.

EUROPEAN REGULATION 2016/425 RELATING TO PERSONAL PROTECTIVE EQUIPMENT

CATEGORIES

- CATEGORY I** protects against minor risks
CATEGORY II protects against intermediate risks; certified by a notified body.
CATEGORY III protects against life-threatening risks (microbiological, chemical, etc.) certified and checked annually by a notified body. (notified body number must be stated)

STANDARD EN ISO 21420:2020+A1:2024

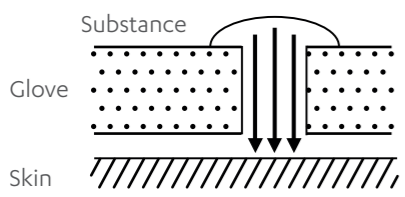
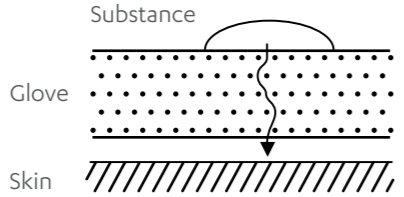
General requirements and test methods applicable to all personal protective gloves.

It covers:

- | The design and construction of the glove
- | Electrostatic property (optional)
- | Innocuousness
- | Comfort and efficiency
- | Marking and information provided by the manufacturer

STANDARD EN ISO 374-1: 2016+A1:2018 PROTECTION AGAINST CHEMICALS

How do you determine a glove's resistance when in contact with a chemical?

PENETRATION	PERMEATION	DEGRADATION
<p>Penetration describes the passage of a chemical through the imperfections of the material, or the pores and joints of the glove*.</p> 	<p>Permeation is the diffusion of a chemical, on a molecular level, through the glove material*.</p> 	<p>Degradation concerns the determination of resistance to degradation by chemicals. Degradation = transformation with deterioration of one or more properties of the glove material, after being in contact with a chemical. For example, peeling, swelling, disintegration, weakening, discoloration, dimensional variations, hardening, softening, etc.</p>

* Source: French National Research and Safety Institute

The standard is based on 3 test methods:




- | Penetration test under standard EN ISO 374-2:2019
- | Permeation test under standard EN 16523-1:2015+A1:2018
- | Degradation test under standard EN 374-4:2019

These three tests must be carried out in order to claim that the glove provides protection against a chemical. The results are stated on the product information leaflet.

CHEMICAL PERMEATION: EN 16523-1:2015+A1:2018

The risk of chemical permeation is defined as the substance passing through the glove. The migration of chemical molecules through the glove is determined by the breakthrough time (in minutes) of the chemical through the glove. The choice of glove is based on its level of performance (breakthrough time) which determines whether it belongs to a type of protection (A, B or C).

1 pictogram & 3 types of protection:

TYPE OF GLOVE	REQUIREMENT	EXAMPLE OF MARKING
Type A	Breakthrough time \geq 30 mins for at least 6 chemicals	
Type B	Breakthrough time \geq 30 mins for at least 3 chemicals	
Type C	Breakthrough time \geq 10 mins for at least 1 chemical	

Official list of chemicals listed for standard EN ISO 374-1:2016+A1:2018

A	Methanol	67-56-1	Primary alcohol
B	Acetone	67-64-1	Ketone
C	Acetonitrile	75-05-8	Nitrile compound
D	Dichloromethane	75-09-2	Chlorinated hydrocarbon
E	Carbon disulphide	75-15-0	Sulfur-containing organic compound
F	Toluene	108-88-3	Aromatic hydrocarbon
G	Diethylamine	109-89-7	Amine
H	Tetrahydrofurane	109-99-9	Heterocyclic and ether compound
I	Ethyl acetate	141-78-6	Ester
J	n-Heptane	142-82-5	Saturated hydrocarbon
K	Sodium hydroxide 40%	1310-73-	Inorganic base
L	Sulfuric acid 96%	7664-93-9	Inorganic mineral acid, oxidising
M	Nitric acid 65%	7697-37-2	Inorganic mineral acid, oxidising
N	Acetic acid 99%	64-19-7	Organic acid
O	Ammonia 25%	1336-21-6	Organic base
P	Hydrogen peroxide 30%	7722-84-1	Peroxide
S	Hydrogen fluoride 40%	7664-39-3	Inorganic mineral acid
T	Formaldehyde 37%	50-00-0	Aldehyde


STANDARD EN ISO 374-5: 2016 PROTECTION AGAINST MICRO-ORGANISMS

The gloves must comply with the liquid-tightness test in accordance with standard EN ISO 374-2:2019.

It is also possible to claim protection against viruses if the glove complies with test ISO 16604: 2004 (method B).




 <p>EN ISO 374-5:2016</p>	<p>For gloves that protect against bacteria and fungi</p>
 <p>EN ISO 374-5:2016 VIRUS</p>	<p>For gloves that protect against bacteria, fungi and viruses</p>

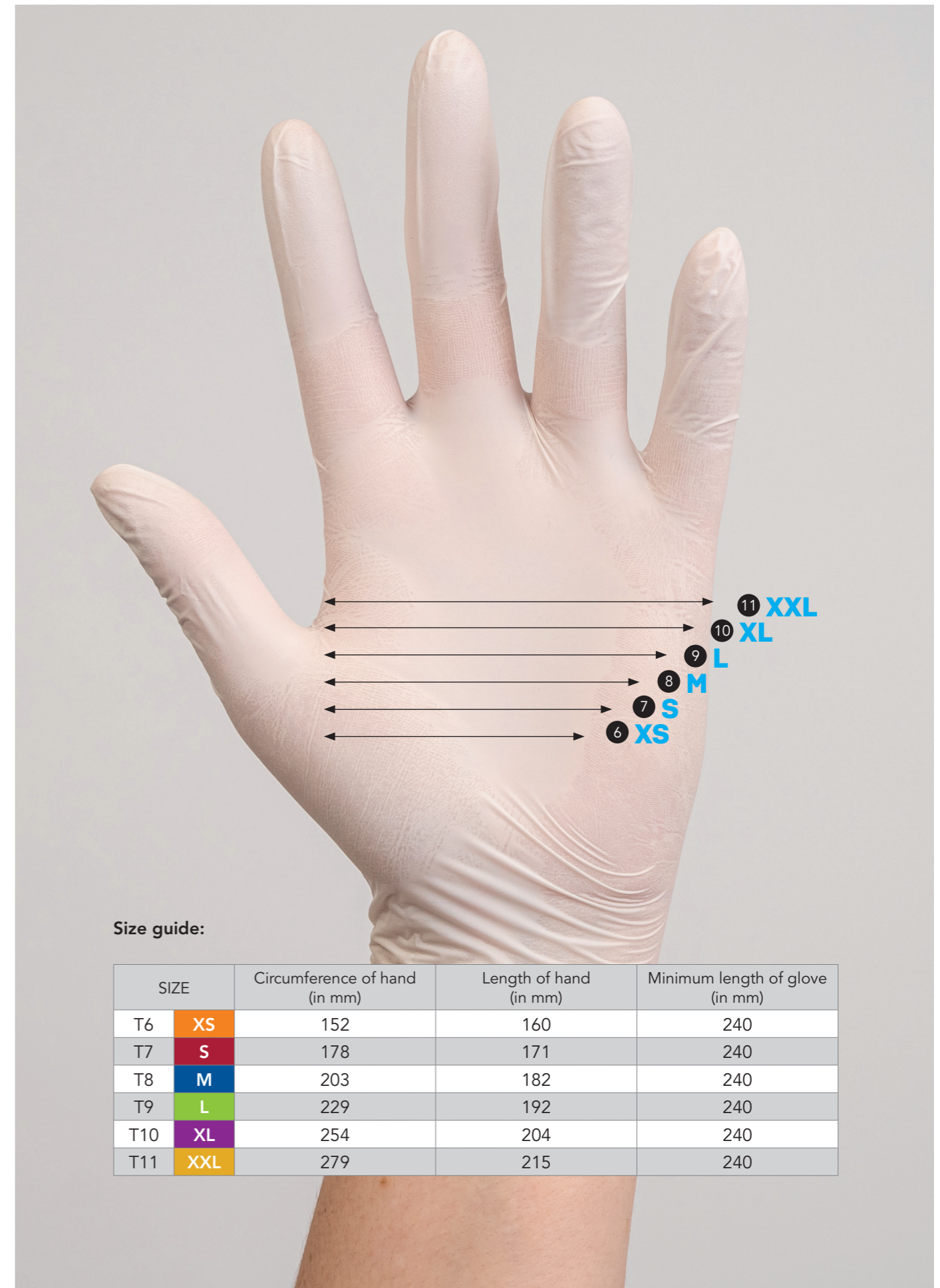
OTHER STANDARDS

 <p>EN 421:2010</p>	<p>For gloves that protect against radioactive particles</p>
---	--

 <p>ASTM D6978-05</p>	<p>For gloves that protect against chemotherapy medicines</p>
---	---

PICTOGRAMS / LEGEND

 <p>PF</p>	<p>Powder-free</p>
 <p>P</p>	<p>Powdered</p>
	<p>Food contact</p>



Size guide:

SIZE	Circumference of hand (in mm)	Length of hand (in mm)	Minimum length of glove (in mm)
T6 XS	152	160	240
T7 S	178	171	240
T8 M	203	182	240
T9 L	229	192	240
T10 XL	254	204	240
T11 XXL	279	215	240



OUR RANGE & APPLICATIONS

We offer a wide range of nitrile, latex, and vinyl gloves, as well as polyethylene gloves. Available in various sizes from XS to XXL, most are packaged in cartons of 10 boxes of 100 gloves.

Manufactured in compliance with current standards, DM and/or PPE and/or food contact regulations, they are suitable for use in the food industry, medical sector, or industrial applications.



NITRILE

SYNTHETIC RUBBER

Ideal for users sensitive to or allergic to natural latex.

PROTECTION

High resistance against punctures, chemicals, and contamination.

DEXTERITY

Great elasticity, optimal fit, and textured fingertips for precise handling.

COMFORT

Tactile sensitivity nearly identical to latex and optimal comfort during prolonged use.

DURABILITY

Robust, with excellent longevity (three times more resistant than latex).

OUR MEDICOM OFFER

- Coverfeel Touch ■ ■
- Coverfeel Care ■ ■
- Coverfeel Care Long ■ ■ ■
- Safetouch Long
- Safetouch Heavy
- Safetouch Platinum
- Safetouch Slim
- Safetouch Vitals
- Safetouch Black Lite
- Safetouch X'Tra
- Hercul Strong
- Hercul Extra Strong



LATEX

PROTECTION

Provides effective protection against biological contaminants.

DEXTERITY

Excellent tactile sensitivity, essential for delicate tasks.

COMFORT

Offers remarkable fit, elasticity, and comfort, ideal for prolonged use.

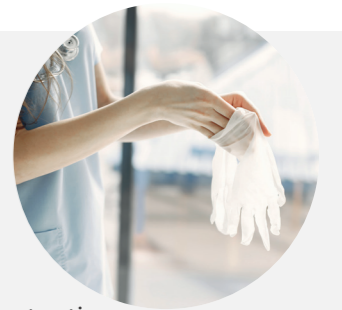
DURABILITY

Good resistance.

Note: Possible allergic risks with prolonged direct skin exposure.

OUR MEDICOM OFFER

- Safetouch Vitals
- Safetouch Soft



VINYL /PE

ECONOMIC OFFER

Affordable cost, ideal for short-term use.

PROTECTION Standard protection

OUR MEDICOM OFFER

- Vinyl / Safetouch Everstrong
- PE

MADE IN FRANCE

Kolmi®
Coverfeel

ULTIMATE
COMFORT
AND
UNCOMPROMISING
PROTECTION



Without accelerators and without the use of chlorine to minimize allergic risk

Unmatched comfort and ease of donning thanks to the polymer coating



A strong CSR commitment

Protecting the environment
Protecting people
Energizing Balance
Enhancing economic activity in the region



Unmatched Quality Assurance

No compromise on quality, comfort, protection and performance



1140
Kolmi®
Coverfeel Touch

1142
Kolmi®
Coverfeel Care

1144
Kolmi®
Coverfeel Care Long



Security of supply

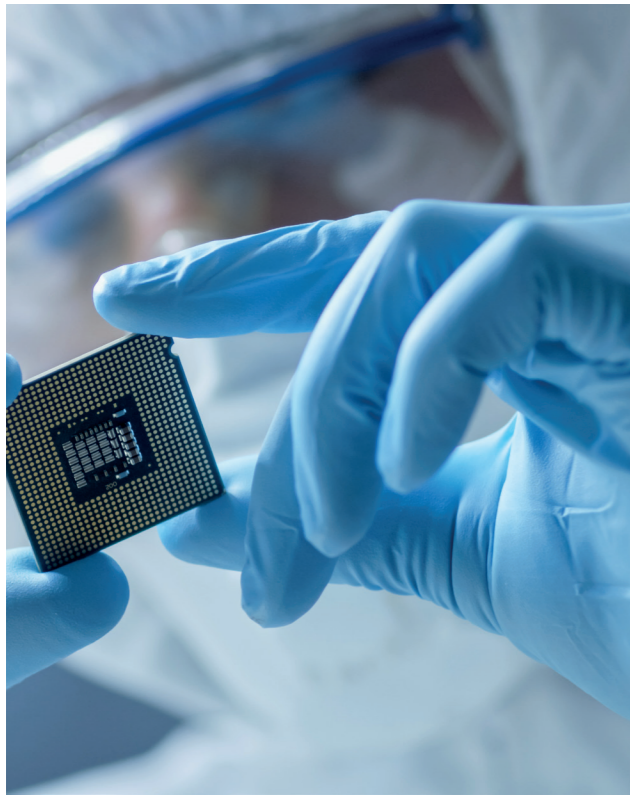
A source of supply local, secure and reliable



New Technological Advancement

Innovative process for better performance without chlorine or vulcanization agents

NITRILE GLOVES



KOLMI COVERFEEL CARE

MADE IN FRANCE

Kolmi®
Coverfeel Care

MD Class I

PPE CAT. III

EN ISO 374-5:2016
VIRUS

ASTM D6978-05

EN 421:2010

PF

EN ISO 374-1:2016 Type B

JET

- Great elasticity & optimal comfort.
- Excellent grip on objects.
- Recommended for medical, industrial, and food environments.
- Made in France.

REF.	Size	Dispenser box	Quantity
1142-B	S	Dispenser box	10 x 100 u
1142-C	M		
1142-D	L		
1142-E	XL		
1142-F	XXL		10 x 90 u

* All types of food

KOLMI COVERFEEL TOUCH

MADE IN FRANCE

Kolmi®
Coverfeel Touch

MD Class I

PPE CAT. III

EN ISO 374-5:2016
VIRUS

ASTM D6978-05

PF

EN ISO 374-1:2016 Type B

JET

- Great elasticity & optimal comfort.
- Excellent grip of objects.
- Recommended in medical, industrial, and agri-food environments.
- Made in France.

REF.	Size	Dispenser box	Quantity
1140-A	XS	Dispenser box	10 x 100 u
1140-B	S		
1140-C	M		
1140-D	L		
1140-E	XL		
1140-F	XXL		10 x 90 u

* All types of food

KOLMI COVERFEEL CARE LONG

MADE IN FRANCE

Kolmi®
Coverfeel Care Long

MD Class I

PPE CAT. III

EN ISO 374-5:2016
VIRUS

ASTM D6978-05

EN 421:2010

PF

EN ISO 374-1:2016 Type B

JET

- Great elasticity & optimal comfort.
- Excellent grip on objects.
- Long cuff.
- Recommended for medical, industrial, and food environments.
- Made in France.

REF.	Size	Dispenser box	Quantity
1144-B	S	Dispenser box	10 x 100 u
1144-C	M		
1144-D	L		
1144-E	XL		
1144-F	XXL		
			10 x 90 u

* All types of food

SAFETOUCH® SLIM

SafeTouch®
Slim

MD Class I

PPE CAT. III

EN ISO 374-5:2016
VIRUS

ASTM D6978-05

PF

EN ISO 374-1:2016 Type B

JET

- Great elasticity & optimal comfort
- Excellent grip on objects
- Recommended for medical, industrial, and agri-food environments

REF.	Size	Dispenser box	Quantity
1175N-A	XS	Dispenser box	10 x 100 u
1175N-B	S		
1175N-C	M		
1175N-D	L		
1175N-E	XL		

* All types of food

SAFETOUCH® LONG

SafeTouch®
Long

MD Class I

PPE CAT. III

EN ISO 374-5:2016
VIRUS

ASTM D6978-05

EN 421:2010

PF

- Textured fingers for better gripping of objects
- 290 mm cuff
- Recommended for medical, chemical, and laboratory environments

REF.	Size	Dispenser box	Quantity
1131P-B	S	Dispenser box	10 x 100 u
1131P-C	M		
1131P-D	L		
1131P-E	XL		

SAFETOUCH® PLATINUM

SafeTouch®
Platinum

MD Class I

PPE CAT. III

EN ISO 374-5:2016
VIRUS

ASTM D6978-05

PF

EN ISO 374-1:2016 Type B

JET

- Great elasticity & optimal comfort
- Excellent grip on objects
- Recommended for medical, industrial, and agri-food environments

REF.	Size	Dispenser box	Quantity
1174N-A	XS	Dispenser box	10 x 100 u
1174N-B	S		
1174N-C	M		
1174N-D	L		
1174N-E	XL		

* All types of food

SAFETOUCH® HEAVY

SafeTouch®
Heavy

MD Class I

PPE CAT. III

EN ISO 374-5:2016
VIRUS

ASTM D6978-05

EN 421:2010

PF

- Excellent strength
- Textured fingers for better grip on objects
- Recommended for medical, chemical, and laboratory environments

REF.	Size	Dispenser box	Quantity
1135P-A	XS	Dispenser box	10 x 100 u
1135P-B	S		
1135P-C	M		
1135P-D	L		
1135P-E	XL		

SAFETOUCH® X'TRA



SafeTouch®
X'tra

PPE CAT. III



- Good dexterity and optimal comfort
- Long cuff 355 mm
- Double chlorination
- Recommended in nuclear laboratories against contamination by radioactive particles

REF.				
30.350N/S	S	Polybag	5 x 100 u	
30.350N/M	M			
30.350N/L	L			
30.350N/XL	XL			

SAFETOUCH® VITALS



SafeTouch®
Vitals

MD Class I

PPE CAT. III



- Good dexterity
- Very light
- Packaging of 200 units
- Recommended in medical and industrial environments

REF.				
1191N-A	XS	Dispenser box	10 x 200 u	
1191N-B	S			
1191N-C	M			
1191N-D	L			
1191N-E	XL			

* All types of food

HERKUL GRIP EXTRA STRONG



Herkul®
Grip Extra Strong

PPE CAT. III



- Unique 3D textured surface for maximum dexterity
- Good grip on oily surfaces
- Very thick glove for increased durability

REF.				
HORNG8N-8M	M	Dispenser box	10 x 100 u	
HORNG8N-9L	L			
HORNG8N-10XL	XL			
HORNG8N-11XXL	XXL			

HERKUL GRIP STRONG



Herkul®
Grip Strong

PPE CAT. III



- Unique 3D textured surface for maximum dexterity
- Good grip on oily surfaces
- Very thick glove for increased durability

REF.				
HBKNG6N-8M	M	Dispenser box	10 x 100 u	
HBKNG6N-9L	L			
HBKNG6N-10XL	XL			
HBKNG6N-11XXL	XXL			

SAFETOUCH® VITALS



SafeTouch®
Vitals

MD Class I

PPE CAT. III



- Good dexterity
- Very light
- Recommended in medical and industrial environments

REF.				
1193N-A	XS	Dispenser box	10 x 100 u	
1193N-B	S			
1193N-C	M			
1193N-D	L			
1193N-E	XL			

* All types of food

SAFETOUCH® BLACK LITE



SafeTouch®
Black Lite

MD Class I

PPE CAT. III



- Great elasticity & optimal comfort
- Excellent grip on objects
- Recommended in medical, industrial, dental, and agri-food environments

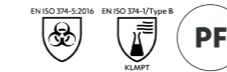
REF.				
MBKN3-6XS	XS	Dispenser box	10 x 100 u	
MBKN3-7S	S			
MBKN3-8M	M			
MBKN3-9L	L			
MBKN3-10XL	XL			

* All types of food

HIGH RISK PVC GLOVE

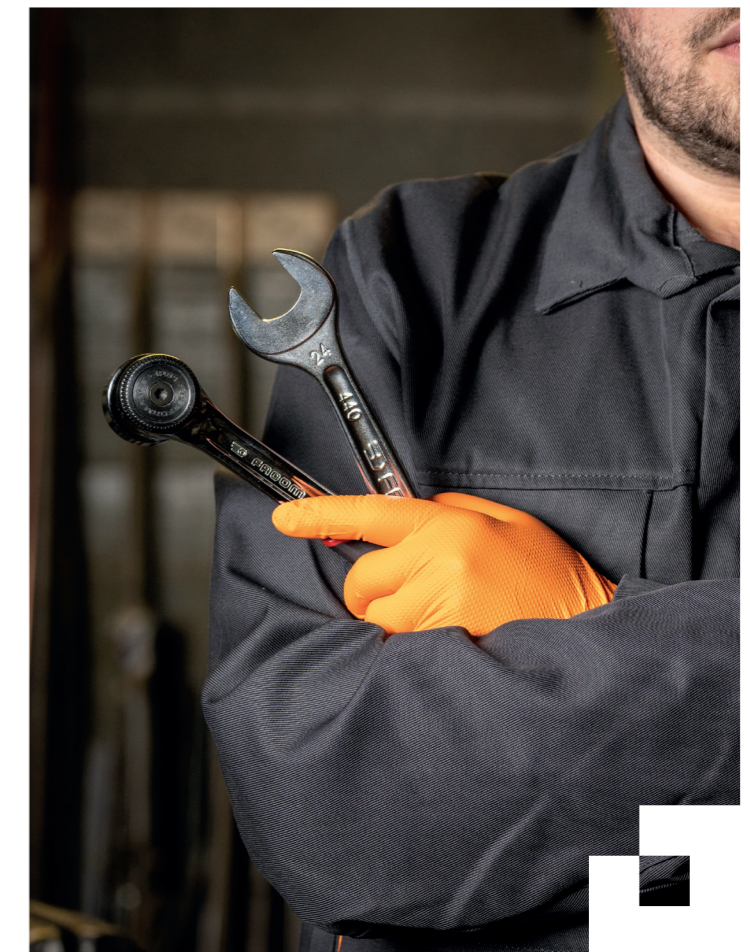


PPE CAT. III



- The PVC glove is designed to protect hands against mechanical and chemical hazards.
- The glove is made of white PVC with a long translucent PVC cuff 400 mm long.
- The glove is waterproof and airtight.
- It is particularly recommended for use in the chemical industry, maintenance and heavy industry: agriculture, construction, waste collection, laundry and industrial cleaning.

REF.				
30.G52N/S	S	Polybag	100 x 2 u	
30.G52N/M	M			
30.G52N/L	L			
30.G52N/XL	XL			



LATEX GLOVES

SAFETOUCH® SOFT



SafeTouch®
Soft

MD Class I

PPE CAT. III



- Great elasticity and dexterity
- Easy donning thanks to its internal polymer coating
- Recommended in medical and industrial environments

REF.				
1130-A		XS	Dispenser box	10 x 100 u
1130-B		S		
1130-C	●	M		
1130-D		L		
1130-E		XL		



SOFT & VITALS RANGE

Our gloves come from responsibly and sustainably managed rubber tree plantations, according to internationally recognized principles. They are also 100% produced using renewable biomass energy (wood) to reduce the carbon footprint.

SAFETOUCH® VITALS



SafeTouch®
Vitals

MD Class I

PPE CAT. III



- Great elasticity and very good dexterity
- Recommended in medical and industrial environments
- Powdered

REF.				
1121-A		XS	Dispenser box	10 x 100 u
1121-B		S		
1121-C	●	M		
1121-D		L		
1121-E		XL		

SAFETOUCH® VITALS



SafeTouch®
Vitals

MD Class I

PPE CAT. III



- Great elasticity and very good dexterity
- Recommended in medical and industrial environments

REF.				
1122-A		XS	Dispenser box	10 x 100 u
1122-B		S		
1122-C	●	M		
1122-D		L		
1122-E		XL		

* Acidic food restrictions

VINYL GLOVES

SAFETOUCH® EVERSTRONG



SafeTouch®
Everstrong

MD Class I

PPE CAT. III



- Good elasticity
- Optimal comfort
- Recommended in medical, industrial, and agri-food environments

REF.				
MCLV5-7S		S	Dispenser box	10 x 100 u
MCLV5-8M	⊗	M		
MCLV5-9L		L		
MCLV5-10XL		XL		

* Fatty food restrictions

SAFETOUCH® EVERSTRONG



SafeTouch®
Everstrong

PPE CAT. III



- Good elasticity
- Optimal comfort
- Recommended for industrial and agri-food environments
- Powdered

REF.				
MCLVP4-7S		S	Dispenser box	10 x 100 u
MCLVP4-8M	⊗	M		
MCLVP4-9L		L		
MCLVP4-10XL		XL		

* Fatty food restrictions

PE GLOVES

PE GLOVE 270MM



- Polyethylene material for good dexterity
- Very short use (service stations...)
- Ambidextrous

REF.				
30.301/M	⊗	M	Dispenser box	50 x 100 u
30.301/L		L		

PE GLOVE 920MM



- Large length - 920 mm
- Ambidextrous
- Recommended in the veterinary, agri-food sector (mixing operations)

REF.				
30.505	●	One size	Polybag	20 x 100 u

03

BODY PROTECTION

Chemical protective coveralls 50

Our range and applications 52

Clean room &
controlled environments coveralls 58

Hygiene gown and coveralls 62



CHEMICAL PROTECTIVE COVERALLS



SMS RANGE



MICROPOROUS RANGE



HDPE RANGE



PPE CAT III COVERALL

Definition

Personal Protective Equipment (PPE) is worn by an individual to protect them against one or more external risks. The assessment of hazardous phenomena is carried out based on their frequency and severity. PPE is designed to protect individuals exposed to dangers.

The choice of appropriate PPE results from a risk analysis related to exposure to hazards.

Regulation

CATEGORY III SUITS AGAINST MAJOR RISKS ACCORDING TO REGULATION (EU) 2016/425 ON PERSONAL PROTECTIVE EQUIPMENT

Protective clothing against chemical hazards is classified into 6 types based on the risk of exposure. It is the responsibility of the user (or the company providing the PPE) to assess hazardous phenomena based on their frequency and severity (risk analysis). The tests conducted include leakage tests of the suit as well as tests for the mechanical performance of the material.

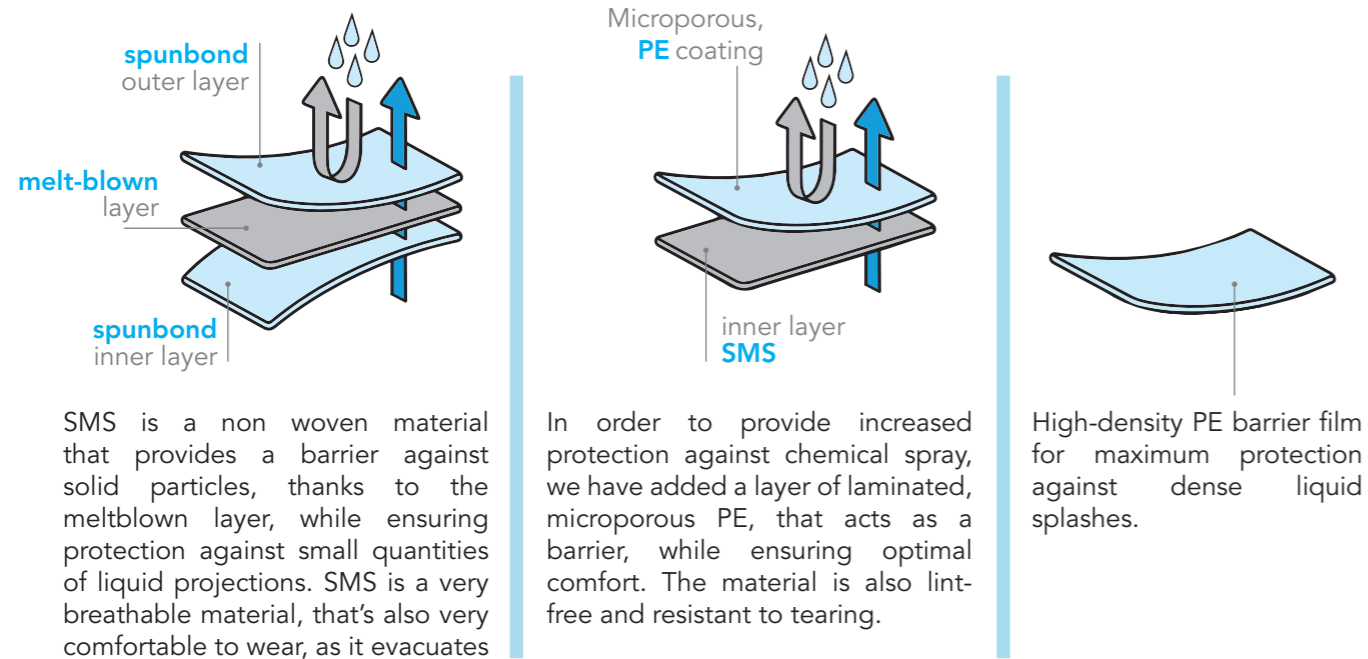
TYPE	MEANING	ASSOCIATED STANDARD
	GENERAL REQUIREMENTS FOR PROTECTIVE CLOTHING	EN ISO 13688
	SPLASH Protection against small quantities of accidental splashes of liquid chemicals	EN 13034
	SOLID PARTICLES Protection against airborne solid particles	EN ISO 13982-1
	SPRAY Protection against spray of liquid chemicals	EN 14605
	LIQUID PRESSURE JETS Protection against chemical substances in the form of pressurised liquid jets	EN 14605

Coveralls categorised for a particular type of protection can also have additional protective properties related to a specific work environment.

TYPE	MEANING	ASSOCIATED STANDARD
	PROTECTION AGAINST ELECTROSTATIC DISCHARGE	EN 1149-5
	PROTECTION AGAINST SOLID RADIOACTIVE PARTICLES Does not provide protection against nuclear radiation.	EN 1073-2
	PROTECTION AGAINST INFECTIOUS AGENTS (viruses, bacteria, fungi, etc.). Recognisable by the letter « B » stated after the Type. Ex.: Type 4B	EN 14126

Our range & main areas of use

Our category III coveralls are suitable for the requirements of various sectors of activity & meet the needs of different professions in particular for use in a protected environment (Helmke drum test to measure particle release). They are made from a non woven SMS with a laminated PE coating for guaranteed protection and comfort.



SMS is a non woven material that provides a barrier against solid particles, thanks to the meltblown layer, while ensuring protection against small quantities of liquid projections. SMS is a very breathable material, that's also very comfortable to wear, as it evacuates perspiration.

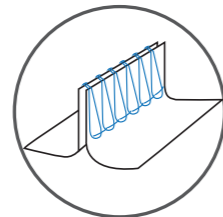
In order to provide increased protection against chemical spray, we have added a layer of laminated, microporous PE, that acts as a barrier, while ensuring optimal comfort. The material is also lint-free and resistant to tearing.

High-density PE barrier film for maximum protection against dense liquid splashes.

Depending on their level of protection and intended use, our products are manufactured with various types of seams:

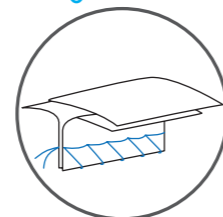
4-thread overlock stitch

Good mechanical resistance
Suitable for protection against projections of light liquids and solid particles (Type 5 and 6)



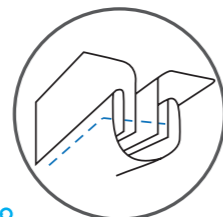
Seams covered with a heat-treated adhesive tape

Greater mechanical resistance and tightness against dust and finer particles.
Compulsory under the French decree of 7 March 2013 on exposure to asbestos



Bound seams

This type of seam can be edged on the inside or outside for greater comfort and is covered with a non-woven bias for absolute mechanical strength while guaranteeing very good liquid-tightness.



Which garments for which types of exposure?

SOLID	Wee Cover [®] blue	Wee Cover [®]	Wee Cover [®] max-blue	Wee Cover [®] max-1	Wee Cover [®] max-1 Integral
LIMITED SPLASH	Wee Pro [®]	Wee Pro [®] col	Wee Back [®]		
SPRAY	Wee Pro [®] max+	Wee Pro [®] max-integral	Wee Pro [®] max-green		
LIQUID JET	Wee Jet [®]	Wee Jet [®] Lite			

Size chart:

SIZE	MEDICOM REF	HEIGHT	CHEST CIRCUMFERENCE
S	01	162 - 170 cm	84 - 92 cm
M	02	170 - 176 cm	92 - 100 cm
L	03	176 - 182 cm	100 - 108 cm
XL	04	182 - 188 cm	108 - 116 cm
XXL	05	188 - 194 cm	166 - 124 cm
XXXL	06	194 - 200 cm	124 - 132 cm



CAT III COVERALL

SMS RANGE



WEECOVER TYPE 6, TYPE 5



PPE CAT. III



- Ultra-breathable SMS material
- Raglan sleeves and loose fit for more comfort
- Jersey cuffs

REF.	Color	Size	G/M2	Packaging	Quantity
WL-C-02	Blue	M	55	Polybag	50 x 1 u
WL-C-03		L			
WL-C-04		XL			
WL-C-05		XXL			
WL-C-06		XXXL			

WEECOVER BLUE TYPE 6, TYPE 5



PPE CAT. III



- Ultra-breathable SMS material
- Raglan sleeves and loose fit for more comfort
- Jersey cuffs
- Blue colour for dirty work

REF.	Color	Size	G/M2	Packaging	Quantity
WL-CB-02	Blue	M	55	Polybag	50 x 1 u
WL-CB-03		L			
WL-CB-04		XL			
WL-CB-05		XXL			
WL-CB-06		XXXL			

WEECOVER ECO TYPE 6, TYPE 5



PPE CAT. III



- Ultra-breathable SMS material
- Raglan sleeves and loose fit for more comfort
- Jersey cuffs
- No individual bag - 2 bags of 25 pieces each

REF.	Color	Size	G/M2	Packaging	Quantity
WL-CECO-03	White	L	50	Bag	2 x 25 u
WL-CECO-04		XL			
WL-CECO-05		XXL			

WEECOVER MAX1 TYPE 6, TYPE 5



PPE CAT. III



- Ultra-breathable SMS material
- Raglan sleeves and loose fit for more comfort
- Thermobonded seams for optimal protection against asbestos

REF.	Color	Size	G/M2	Packaging	Quantity
WL-C1-03	White	L	55	Polybag	50 x 1 u
WL-C1-04		XL			
WL-C1-05		XXL			
WL-C1-06		XXXL			

WEECOVER MAX1BLUE TYPE 6, TYPE 5



PPE CAT. III



- Ultra-breathable SMS material
- Raglan sleeves and loose fit for more comfort
- Thermobonded seams for optimal protection against asbestos
- Blue colour for dirty work

REF.	Color	Size	G/M2	Packaging	Quantity
WL-C1B-02	Blue	M	55	Polybag	50 x 1 u
WL-C1B-03		L			
WL-C1B-04		XL			
WL-C1B-05		XXL			
WL-C1B-06		XXXL			
WL-C1B-07		4XL			

WEECOVER MAX1INTEGRAL TYPE 6, TYPE 5



PPE CAT. III



- Ultra-breathable SMS material
- Raglan sleeves and loose fit for greater ease of movement
- Thermally bonded seams for optimal protection against asbestos
- Integrated overboots with anti-slip sole

REF.	Color	Size	G/M2	Packaging	Quantity
WL-C1-03I	White	L	55	Polybag	20 x 1 u
WL-C1-04I		XL			
WL-C1-05I		XXL			
WL-C1-06I		XXXL			

WEEBACK TYPE 6, TYPE 5



PPE CAT. III



- Back made of breathable SMS for optimal comfort
- Jersey cuffs
- Gusseted crotch triangle for better durability
- Waterproof heat-sealed seams

REF.	Color	Size	G/M2	Packaging	Quantity
WL-B-01	White	S	118	Polybag	50 x 1 u
WL-B-02		M			
WL-B-03		L			
WL-B-04		XL			
WL-B-05		XXL			
WL-B-06		XXXL			






WEEPRO TYPE 6, TYPE 5



PPE CAT. III



- Breathable material
- Raglan sleeves and loose fit for added comfort
- Jersey cuffs

REF.			G/M2		
WL-P-01		S	63	Polybag	50 x 1 u
WL-P-02		M			
WL-P-03		L			
WL-P-04		XL			
WL-P-05		XXL			
WL-P-06		XXXL			






WEEPRO COL TYPE 6, TYPE 5



PPE CAT. III



- Breathable material
- Raglan sleeves and loose fit for more comfort
- Jersey cuffs
- With collar

REF.			G/M2		
WL-PC-02		M	63	Polybag	50 x 1 u
WL-PC-03		L			
WL-PC-04		XL			
WL-PC-05		XXL			
WL-PC-06		XXXL			






WEEPRO MAX+ TYPE 6, TYPE 5, TYPE 4



PPE CAT. III



- Breathable material
- Thermally sealed seams waterproof to very fine particles, liquids, and aerosols
- Tested against biological risks

REF.			G/M2		
WL-PMP-02		M	63	Polybag	50 x 1 u
WL-PMP-03		L			
WL-PMP-04		XL			
WL-PMP-05		XXL			
WL-PMP-06		XXXL			






WEEPRO MAXGREEN TYPE 6, TYPE 5, TYPE 4



PPE CAT. III



- Thermosealed seams waterproof to liquid splashes and aerosols
- Chin strap for increased protection
- Ideal for phytosanitary treatments

REF.			G/M2		
WL-PMG-02		M	63	Polybag	50 x 1 u
WL-PMG-03		L			
WL-PMG-04		XL			
WL-PMG-05		XXL			






WEEJET TYPE 6, TYPE 5, TYPE 3, TYPE 4



PPE CAT. III



- Quadruple protection on the front thanks to a double flap
- Material and seams highly waterproof to intense splashes
- Perfectly fitted to the body and movements
- 88 g/m²

REF.			G/M2		
WL-J1-02		M	88	Polybag	25 x 1 u
WL-J1-03		L			
WL-J1-04		XL			
WL-J1-05		XXL			
WL-J1-06		XXXL			






WEEJET LITE TYPE 6, TYPE 5, TYPE 4, TYPE 3



PPE CAT. III



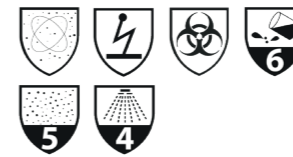
- Lightweight and waterproof material
- Double front flap and chin guard
- Zip easy to grasp with gloves
- Heat-sealed seams for perfect tightness
- 70 g/m²

REF.			G/M2		
WL-J2-02		M	70	Polybag	25 x 1 u
WL-J2-03		L			
WL-J2-04		XL			
WL-J2-05		XXL			
WL-J2-06		XXXL			






WEEPRO MAXINTEGRAL TYPE 6, TYPE 5, TYPE 4



PPE CAT. III



- Breathable material
- Heat-sealed seams waterproof to very fine particles, liquids and aerosols
- Tested against biological risks
- Integrated overshoes

REF.			G/M2		
WL-PMI-01		S	63	Polybag	50 x 1 u
WL-PMI-02		M			
WL-PMI-03		L			
WL-PMI-04		XL			
WL-PMI-05		XXL			
WL-PMI-06		XXXL			

CLEAN ROOM & CONTROLLED ENVIRONMENTS COVERALLS

The WeePro Labo® range has been specially designed to meet the needs of cleanroom professionals. Made from our new **Micromium®** material, it effectively controls contamination while ensuring comfort and breathability for the wearer.

Available in **sterile** and **non-sterile** versions as needed, the entire range has been tested with the Helmke Drum to ensure cleanliness.

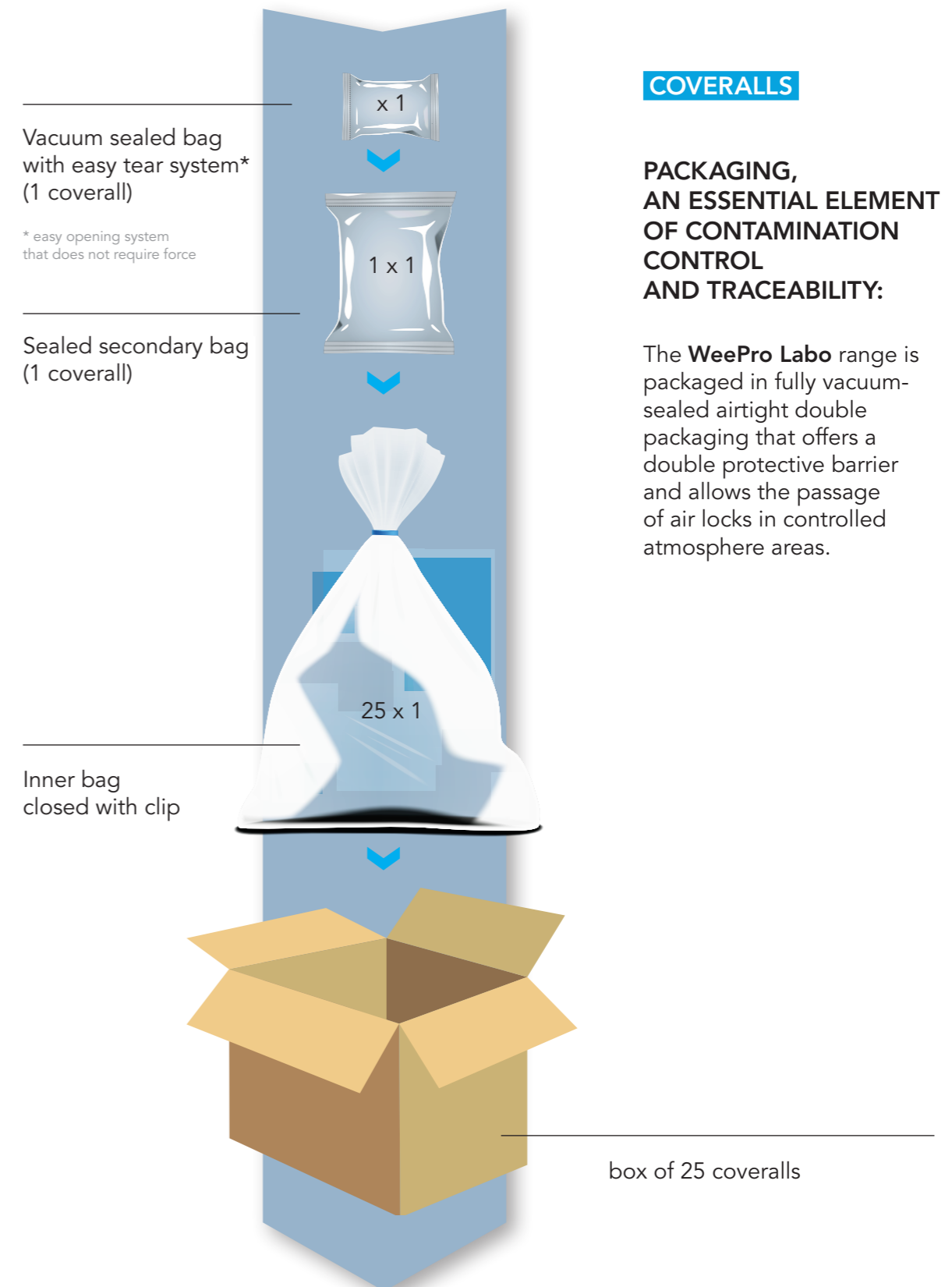


PACKAGING & TRACEABILITY

COVERALLS

PACKAGING, AN ESSENTIAL ELEMENT OF CONTAMINATION CONTROL AND TRACEABILITY:

The **WeePro Labo** range is packaged in fully vacuum-sealed airtight double packaging that offers a double protective barrier and allows the passage of air locks in controlled atmosphere areas.



CLEANROOM COVERALLS

WEEPRO LABO TYPE 5, TYPE 6 - STERILE - INTEGRATED BOOT COVERS



PPE CAT. III



- MICROMIUM® material with very low contamination
- Garment with ergonomic and comfortable fit: elastic cuffs, ankles, and waist - Integrated overshoes with sole
- Triple packaging: Carton with a sealed bag of 25 units - 1st packaging with "Easytear" system - 2nd packaging vacuum-sealed individual pouch - Sterile
- Bound seams, tunnelled elastics, and thumb loops

REF.			G/M2		
WL-PLMIS-02		M	60	Triple packed	25 x 1 u
WL-PLMIS-03		L			
WL-PLMIS-04		XL			
WL-PLMIS-05		XXL			

WEEPRO LABO TYPE 5, TYPE 6 - STERILE



PPE CAT. III



- MICROMIUM® material with very low contamination
- Garment with ergonomic and comfortable fit: elastic cuffs, ankles, and waist
- Triple packaging: Carton with a sealed bag of 25 units - 1st packaging with "Easytear" system - 2nd packaging vacuum-sealed individual pouch - Sterile
- Bound seams, tunnelled elastics, and thumb loops

REF.			G/M2		
WL-PLMS-02		M	60	Triple packed	25 x 1 u
WL-PLMS-03		L			
WL-PLMS-04		XL			
WL-PLMS-05		XXL			

WEEPRO LABO TYPE 5, TYPE 6



PPE CAT. III



- MICROMIUM® material with very low contamination
- Clothing with ergonomic and comfortable fit: elasticated cuffs, ankles, and waist
- Triple packaging: Carton with a sealed bag of 25 units - 1st packaging with "Easytear" system - 2nd packaging vacuum-sealed individual pouch
- Bound seams, tunnelled elastics, and thumb loops

REF.			G/M2		
WL-PLM-02		M	55	Triple packed	25 x 1 u
WL-PLM-03		L			
WL-PLM-04		XL			
WL-PLM-05		XXL			

WEEPRO LABO TYPE 5, TYPE 6 - INTEGRATED BOOT COVERS



PPE CAT. III



- MICROMIUM® material with very low contamination
- Garment with ergonomic and comfortable fit: elasticated cuffs, ankles, and waist - Integrated overshoes with sole
- Triple packaging: Carton with a sealed bag of 25 units - 1st packaging with "Easytear" system - 2nd packaging vacuum-sealed individual pouch
- Bound seams, tunnelled elastics and thumb loops

REF.			G/M2		
WL-PLMI-02		M	60	Triple packed	25 x 1 u
WL-PLMI-03		L			
WL-PLMI-04		XL			
WL-PLMI-05		XXL			

ACCESSORIES

SLEEVES WEEPRO TYPE PB 6



PPE CAT. III



- Highly waterproof material for liquid splashes
- Non-linting material to prevent contamination in controlled areas
- Antistatic treated material on both sides facilitating the dissipation of electrostatic charges

REF.			G/M2		
WL-ME-00		One size	63	Polybag	1 x 200 u

CHEMICAL PROTECTIVE GOWN WEEPRO TYPE PB 6



PPE CAT. III



- Material with very low fluffiness
- Jersey cuffs
- Available in 4 sizes

REF.			G/M2		
WL-BE-02		M	63	Polybag	50 x 1 u
WL-BE-03		L			
WL-BE-04		XL			
WL-BE-05		XXL			

SLEEVES WEEJET TYPE PB 6, TYPE PB 3, TYPE PB 4



PPE CAT. III



- Excellent protection against chemicals
- Very good impermeability against splashes under pressure or aerosols thanks to heat-sealed seams
- Elasticated thumb pass

REF.			G/M2		
WL-MEJ-00		One size	90	Polybag	1 x 200 u

WEEPRO LABO SLEEVE - STERILE



PPE CAT. I

- Made from Micromium, non linting material
- Helmke Cat I drum
- Sterile

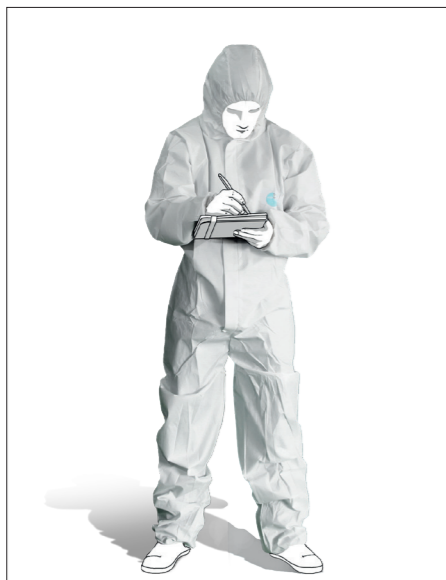
REF.			G/M2		
WL-MMS-00		One size	60	Triple packed	25 x 50 u

HYGIENE GARMENTS

Short-use garments

We offer a wide range of single-use personal protective equipment, including gowns, coveralls, aprons, pants, and tunics for healthcare personnel.

These protective garments help shield users from potential splashes in various settings, such as factory visits, maintenance or cleaning tasks, and industries like chemical, petrochemical, or food processing. They are also suitable for catering, public sector, medical environments, and any other area with risks of dirt or contamination.



COVERALLS AND GOWNS

HYGIENE COVERALLS POLYPROPYLENE HOOD ZIP



- Pleasant and light, polypropylene is very breathable.
- Hooded model without flap on zip closure
- Elasticated model at the wrists and ankles

REF.		G/M2		
40.001/02	M	40	Polybag	25 x 1 u
40.001/03	L			
40.001/04	XL			
40.001/05	XXL			

HYGIENE COVERALLS POLYPROPYLENE COLLAR ZIP



- Pleasant and light, polypropylene is very breathable.
- Model with collar without flap on zip closure
- Elasticated model at the wrists and ankles

REF.		G/M2		
40.101/02	M	40	Polybag	25 x 1 u
40.101/03	L			
40.101/04	XL			
40.101/05	XXL			
40.101/06	XXXL			
40.101/07	4XL			

HYGIENE COVERALLS POLYPROPYLENE HOOD ZIP



- Pleasant and lightweight, polypropylene is very breathable.
- Hooded model without zipper flap
- Elasticated model at the wrists and ankles

REF.		G/M2		
40.201BM/02	M	40	Polybag	25 x 1 u
40.201BM/03	L			
40.201BM/04	XL			
40.201BM/05	XXL			

HYGIENE COVERALLS POLYPROPYLENE COLLAR ZIP



- pleasant and lightweight, polypropylene is very breathable.
- model with collar without flap on zipper closure
- elasticated model at the wrists and ankles

REF.		G/M2		
40.205BM/03	L	40	Polybag	25 x 1 u
40.205BM/04	XL			
40.205BM/05	XXL			
40.205BM/06	XXXL			

HYGIENE GOWN POLYPROPYLENE COLLAR SNAP FASTENER



- pleasant, light, and breathable
- elasticated at the wrists
- available in several colours: white, green or red
- recommended for minor dirt risks

REF.		G/M2		
40.301/02	M	40	Polybag	50 x 1 u
40.301/03	L			
40.301/04				
40.301R/04	XL			
40.301V/04				
40.301/05				
40.301R/05	XXL			
40.301V/05				
40.301/06	XXXL			
40.301R/06				

HYGIENE GOWN POLYPROPYLENE COLLAR SNAP FASTENER



- pleasant and light
- elasticated at the cuffs
- 2 exterior pockets
- recommended against minor dirt risks

REF.		G/M2		
40.401/02	M	40	Polybag	50 x 1 u
40.401/03	L			
40.401/04	XL			
40.401/05	XXL			
40.401/06	XXXL			

HYGIENE GOWN POLYPROPYLENE COLLAR ZIP



- elasticated cuffs
- left inner pocket
- recommended for minor risks and dirt risks

REF.		G/M2		
40.632/02	M	40	Polybag	50 x 1 u
40.632/03	L			
40.632/04	XL			
40.632/05	XXL			
40.632/06	XXXL			

HYGIENE GOWN POLYPROPYLENE COLLAR ZIP



- elasticated at the cuffs
- left inner pocket
- recommended for minor risks and dirt risks

REF.		G/M2		
40.702/02	M	40	Polybag	50 x 1 u
40.702/03	L			
40.702/04	XL			
40.702/05	XXL			

HYGIENE GOWN POLYPROPYLENE COLLAR ZIP



- pleasant and light
- elasticated at the wrists
- without pockets to prevent objects from falling out
- recommended for minor dirt risks

REF.			G/M2			
40.635/02			40	Polybag	50 x 1 u	
40.635/03						S
40.635/04						L
40.635/05						XL

HYGIENE GOWN MICROPOROUS COLLAR SNAP FASTENER



- imper-respirant
- with PE film for better sealing
- elasticated cuffs
- suitable for controlled environments with limited fiber particle release
- antistatic

REF.			G/M2			
40.550/02			60	Polybag	50 x 1 u	
40.550/03						M
40.550/04						L
40.550/05						XL
40.550/05						XXL

POLYETHYLENE APRON 18 µm 120 X 70 CM



- Economic solution
- Stretchable PE tie fastenings
- "One by one" dispensing system in a sachet

REF.			M		
50.301		One size	18	Polybag	10 x 100 u

POLYPROPYLENE APRON 18 µm 120 X 70 CM



- Economic solution
- Attachments with stretchable PE ties
- "one by one" distribution system in sachet / also available in roll dispenser
- Available in different colours and thicknesses

REF.			M		
50.101R		One size	18	Rolls	5 x 200 u

HYGIENE GOWN MICROPOROUS COLLAR ZIP



- imper-respirant
- with PE film for better waterproofing
- elasticated cuffs
- suitable for controlled environments with limited fiber particle release
- antistatic

REF.			G/M2			
40.507/03			60	Polybag	50 x 1 u	
40.507/04						L
40.507/05						XL
40.507/06						XXL

APRON POLYPROPYLENE 18 µm 120 X 70 CM



- Economic solution
- Stretchable PE tie fastenings
- "One by one" dispensing system in a sachet

REF.			M		
50.101		One size	18	Polybag	10 x 100 u

POLYETHYLENE APRON 18 µm 140 X 78 CM



- Economic solution
- Stretchable PE tie fastenings
- "One by one" dispensing system in a sachet

REF.			M		
50.201		One size	18	Polybag	10 x 100 u
50.201BL		One size	18	Polybag	10 x 100 u

POLYETHYLENE APRON 30 µm 120 X 70 CM



- Stretchable PE tie fastenings
- "One by one" dispensing system in a sachet

REF.			M		
50.401		One size	30	Polybag	10 x 100 u
50.401BL		One size	30	Polybag	10 x 100 u

**APRON POLYETHYLENE
140 X 75 CM 35 µm**



- Easy to use, easy to put on
- Large size: goes down to the ankles
- Suitable for all environments

REF.			M		
50.002		One size	35	Polybag	20 x 10 u

**POLYETHYLENE APRON 40 µm
120 X 70 CM**



- Stretchable PE tie fastenings
- "One by one" dispensing system in a sachet

REF.				
50.501		One size	Polybag	100 x 5 u

PVC APRON 300 µm 115 X 90 CM



- Flexible and durable
- Reusable
- Back closure with ties at the waist
- Recommended for agri-food industry, communities, or catering

REF.			M		
50.651		One size	300	Polybag	10 x 1 u

HYGIENE GOWN CPE



- Superior protection
- Covers the entire body
- "thumb hole" system
- Tied with straps

REF.			M		
J50656		One size	35	Polybag	3 x 25 u

**POLYETHYLENE APRON 70 µm
140 X 70 CM**



- Stretchable PE tie fastenings
- "One by one" dispensing system in a sachet

REF.			M		
50.601		One size	70	Polybag	5 x 50 u

**POLYPROPYLENE APRON
45G/M² 110 X 70 CM**



- Pleasant, light and breathable
- Tear-resistant
- Back closure with ties
- Recommended for dry environments

REF.			G/M2		
50.753		One size	45	Without sub-packaging	100 u

**HYGIENE GOWN POLYETHYLENE HOOD
SNAP FASTENER**



REF.			G/M2		
50.001		One size	15	Polybag	10 x 1 u

**WATERPROOF ISOLATION GOWN PP
40 G/M² WITH PE COATING**



- Coated waterproof PE blouse
- "Flexneck" technology with double elastics
- Large opening
- Thumb hole

REF.			G/M2		
A69955		XL	40	Polybag	10 x 10 u

ISOLATION GOWN SMS 24 G/M²



- Comfort & durability thanks to SMS
- "Flexneck" technology with double elastics
- Thumb hole

REF.			G/M2		
A69962		XL	24	Polybag	10 x 10 u

POLYPROPYLENE SLEEVE + POLYETHYLENE COATING



- PP coated PE
- Better waterproofing
- Reduced fiber release
- Suitable for protected environments

REF.			G/M2		
20.400		One size	45	Polybag	10 x 100 u

POLYETHYLENE SLEEVES



- The plasticized and elasticated PE sleeves ensure forearm protection against various types of dirt
- Food contact

REF.			M		
20.300		One size	20	Polybag	10 x 100 u

* All types of food

POLYETHYLENE SLEEVE



- The plasticized and elasticated PE sleeves ensure forearm protection against various types of dirt
- Food contact

REF.			M		
20.200		One size	20	Polybag	10 x 100 u

* All types of food

POLYETHYLENE SLEEVES



- The plasticized and elasticated PE sleeves ensure forearm protection against various types of dirt
- Food contact

REF.			M		
20.100		One size	20	Polybag	10 x 100 u

* All types of food

POLYPROPYLENE PANT



- Pleasant, light and breathable
- Easy to put on
- Elasticated waist and ankles

REF.			G/M2		
40.170/04		One size	45	Polybag	50 x 1 u

BRIEF POLYPROPYLENE



- Elasticated waistband

REF.			G/M2		
40.465		One size	40	Polybag	10 x 50 u

DISPOSABLE VISCOSE BOXER UNDERPANT

MADE IN FRANCE



- Soft, non-irritating, and absorbent viscose material for enhanced comfort
- White and opaque to ensure privacy
- Loose fit for greater freedom of movement
- Elastic waistband for optimal support

REF.			G/M2		
40.466		One size	60	Polybag	3 x 100 u

044

HEAD PROTECTION

Our range

74



OUR HEAD PROTECTION RANGE



We offer a complete range of single-use heacovers for the medical and sensitive industries, including a specific range manufactured in France at our Angers factory.

To meet all your needs, you will find surgical caps, hoods, clip or bouffant caps, visored caps, as well as chef's hats.

HEAD COVERS

BOUFFANT CLIP POLYPROPYLENE 10 G/M2

MADE IN FRANCE

MD Class I



- Comfortable, breathable, and highly stretchable to accommodate all hair types.
- Very durable.
- Latex-free.

REF.		G/M2		
C12004		10	Dispenser box	300 u
C12103				
C12513A			Polybag	12 x 150 u

BOUFFANT CLIP POLYPROPYLENE 15 G/M2

MADE IN FRANCE

MD Class I



- Comfortable, breathable and very stretchy.
- Very resistant.
- Latex-free.

REF.		G/M2		
C12001		15	Dispenser box	200 u
C12101				
C12201				

BOUFFANT CLIP POLYPROPYLENE 15 G/M2

MADE IN FRANCE

MD Class I



- Comfortable, breathable and very stretchy.
- Very resistant.
- Latex-free.

REF.		G/M2		
C12501A		15	Polybag	12 x 100 u
C12511A				

SURGICAL CAP VISCOSE 40 G/M2

MADE IN FRANCE

MD Class I



- Lightweight and highly stretchable.
- Very durable.
- Latex-free.

REF.		G/M2		
C13600		40	Dispenser box	5 x 100 u
C13700				

**BOUFFANT CLIP POLYPROPYLENE
12 G/M2**



- Very covering.
- Special double elastic for comfort.
- Latex-free.

REF.		G/M2		
70.104		12	Dispenser box	4 x 250 u
70.111				
70.111BLACK			Polybag	
70.112			Dispenser box	
70.113				
70.224				

**BOUFFANT CLIP POLYPROPYLENE
12 G/M2**



- Optimal support.
- Very covering.
- Latex-free.

REF.		G/M2		
70.101		12	Polybag	10 x 100 u
70.102				
70.103				

**BOUFFANT CAP POLYPROPYLENE
12 G/M2 48 CM**



- Very light.
- Fits all hair types.
- Latex-free.

REF.		G/M2		
70.001		12	Polybag	10 x 100 u
70.002				
70.003				

**BOUFFANT CAP POLYPROPYLÈNE
12 G/M2 53 CM**



- Very light.
- Fits all hair types.
- Latex-free.

REF.		G/M2		
70.011		12	Dispenser box	5 x 100 u
70.011S			Polybag	10 x 100 u
70.012			Dispenser box	5 x 100 u
70.013				

**BOUFFANT CLIP POLYPROPYLENE
12 G/M2**



- Good coverage covering the entire hair.
- Detectable part for sensitive scalps.
- Latex-free.

REF.		G/M2		
70.102D		12	Polybag	10 x 100 u

**BOUFFANT CLIP POLYPROPYLÈNE SMS
14 G/M2 53CM**



- Double special comfort elastic.
- Very soft material in polypropylene SMS.
- Latex-free.

REF.		G/M2		
70.182		14	Polybag	10 x 100 u

**BOUFFANT CAP POLYPROPYLÈNE
12 G/M2 61 CM**



- Very light.
- Fits all hair types.
- Latex-free.

REF.		G/M2		
70.061		12	Polybag	10 x 100 u
70.062				

**PEAKED BOUFFANT CAP
POLYPROPYLENE 15 G/M2**



- Lightweight, it improves user comfort.
- Latex-free.

REF.		G/M2		
70.201		15	Polybag	5 x 100 u
70.201S				10 x 100 u

**SNOODED PEAKED POLYPROPYLENE
40 G/M2**



- Protects the entire hair.
- Conveys a reassuring and professional image.
- Latex-free.

REF.		G/M2		
70.401		40	Dispenser box	5 x 100 u
70.401BL				
70.401S			Polybag	10 x 100 u

**SIMPLE PEAKED POLYPROPYLENE
37 G/M2**



- Model appreciated especially by men.
- Latex-free.

REF.		G/M2		
70.301		37	Dispenser box	5 x 100 u

**BEARD COVER POLYPROPYLENE
10 G/M2**



- Covers the lower part of the face perfectly.
- Provides suitable protection for controlling the environment against beard hair falling.

REF.		G/M2		
70.801		10	Polybag	10 x 100 u
70.802				



**HOOD POLYPROPYLENE
25 G/M2**



- High coverage.
- Effective protection.

REF.		G/M2		
70.701		25	Polybag	10 x 50 u

**HOOD POLYPROPYLENE
25 G/M2**



- Ultra covering.
- Effective protection.
- With built-in 2-ply mask

REF.		G/M2		
70.702		25	Polybag	10 x 50 u
70.703				

**FORAGE CAP POLYPROPYLENE
40 G/M2**



- Use under a helmet for better hygiene.
- Optimal comfort.
- Adapts to different head sizes.

REF.		G/M2		
70.499		40	Dispenser box	5 x 100 u

**FORAGE CAP PAPER
70 G/M2**



- Openwork base, for better breathability of the cap and user comfort.
- Adapts to different head sizes.

REF.		G/M2		
70.501		70	Dispenser box	10 x 100 u
70.502				
70.503				

CHEF'S HAT 100% VISCOSE 60 G/M2



- True pleating.
- Ultra absorbent material.
- Optimal support thanks to its double-layered headband.
- Openwork bottom for better comfort.

REF.		G/M2		
70.611		60	Polybag	10 x 10 u
70.612				

CHEF'S HAT 100 % VISCOSE 63 G/M2 - 21 CM HEIGHT



- High-end model.
- Ultra absorbent material.
- Optimal support thanks to its double-layer headband.
- Removable bottom and velcro fastening.

REF.		G/M2		
70.620		63	Polybag	5 x 10 u
70.625				

CHEF'S HAT 100% VISCOSE 63 G/M2 - 25CM HEIGHT



- Ultra absorbent material.
- Removable bottom for better comfort.
- Double-layer headband for optimal support.

REF.		G/M2		
70.619		63	Polybag	10 x 10 u



CHEMICAL PROTECTION HOOD TYPE PB6

PPE CAT. III



- Optimal fit: Three elastics ensure an excellent fit and a clear field of vision
- Complete coverage: Wrap-around shape covering the shoulders
- High-performance material: Anti-static and flame-retardant SMS fabric, compliant with EN 1149-5 & EN ISO 14116 Index 1 standards
- Enhanced durability: 4-thread seams for increased resistance to tearing and abrasion

REF.			G/M2		
WL-CE/FR-00		One size	55	Polybag	2 x 100 u

CAP WITH NECK PROTECTION



- The rear elastic ensures optimal support
- Polypropylene provides good breathability for increased comfort
- The neck protector offers effective protection against contamination
- The one-size design easily adapts to all body types

REF.		G/M2		
70.498		25	Polybag	5 x 200 u

05

FOOT PROTECTION

Our Range and Applications	84
Our sectors	85
Our offers	86



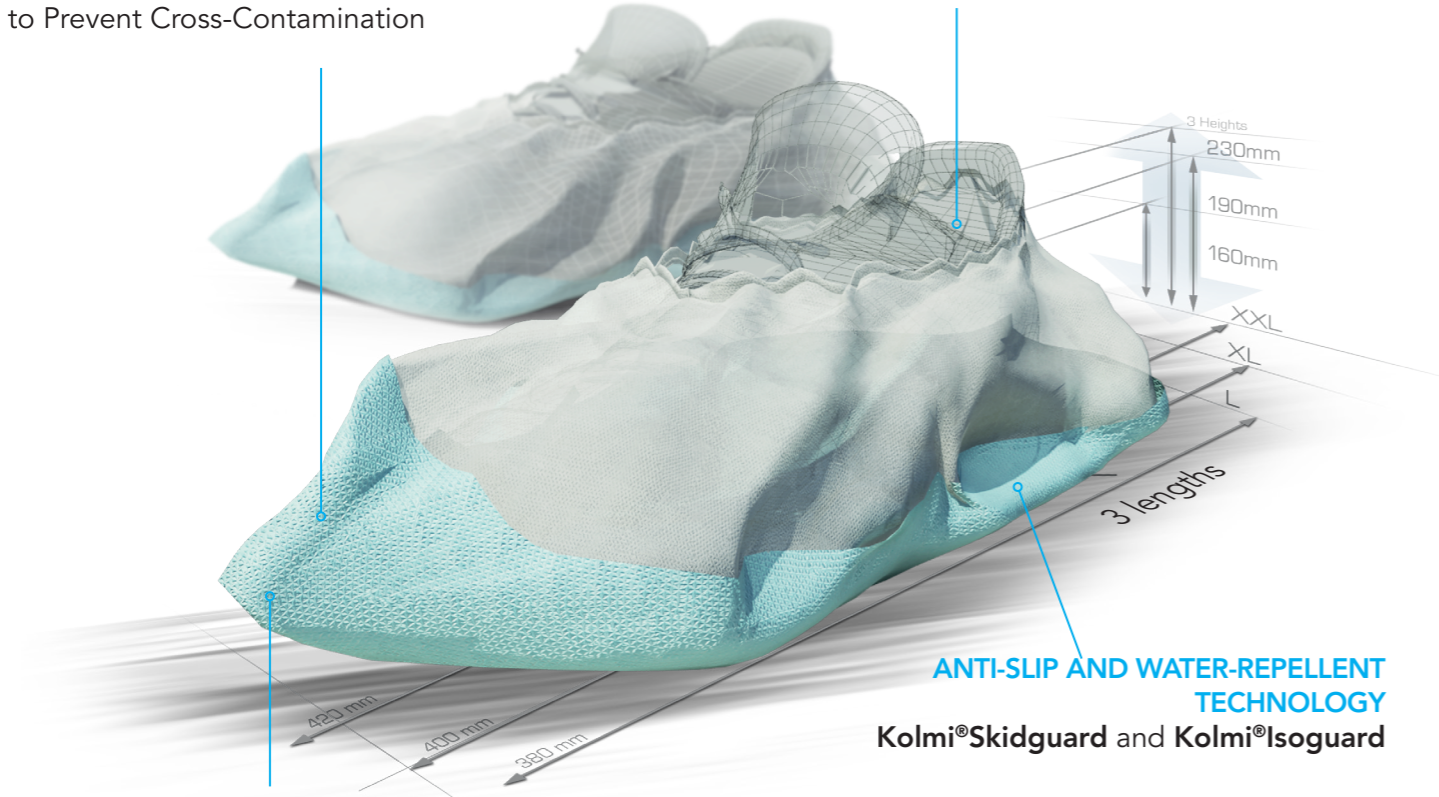
OUR RANGE & POSSIBLE APPLICATIONS

Mainly used in medical and industrial settings, single-use shoe covers are ideal for visitors and staff to help prevent the spread of bacteria in the workplace environment. We offer a wide range of shoe covers for all types of activities.

Our shoe covers, featuring **Kolmi®Skidguard** and **Kolmi®Isoguard** anti-slip technologies, are made in France and provide the best protection for workers in various environments. They are available in different sizes and colors, as well as in various packaging types, including dispenser packs, bulk, with or without bags.

A WIDE CHOICE OF COLORS
to Prevent Cross-Contamination

EASY AND QUICK TO PUT ON



A WIDE RANGE OF SIZES
3 heights and 3 different lengths

SIZES AVAILABLE:



FOOTWEAR OUR SECTORS



MEDICAL & LABORATORIES

- Hospitals / Clinics
- Dental Offices
- Thalassotherapy Centers
- Rehabilitation Centers
- Spas and Beauty Centers
- Veterinary Clinics
- Pharmaceutical Industries
- Research Laboratories



INDUSTRIES

- Automotive
- Nuclear
- Chemical / Petrochemical
- Electronics
- Aerospace
- Mechanics / Painting
- Agriculture
- Construction



HYGIENE & SERVICES

- Food Industry
- Catering / Hospitality / Foodservice (CHR / RHF)
- Cleaning Companies
- Public Sector & Local Authorities
- Airports
- Nurseries
- Real Estate

OUR OFFERS

PREMIUM OFFER

Kolmi® Skidguard

MADE IN FRANCE

Our **Kolmi®Skidguard** shoe covers are hydrophobic and truly anti-slip, thanks to their soles developed with exclusive technology. They are ideal for humid environments and smooth floors, and are suitable for use in operating rooms. Our shoe covers are tested according to the bioburden requirements of standard EN ISO 11737-1 and are certified as Class 1 Medical Devices.

Kolmi® Isoguard

MADE IN FRANCE

Hydrophobic and anti-slip like the **Kolmi®Skidguard** technology, the **Kolmi®Isoguard** range, with reinforced soles, is tested using the Helmke Drum to ensure its low particulate release.

CHEMICAL PROTECTION SHOE COVERS OR BOOT COVERS

With or without soles, made of microporous or polyethylene materials, they provide an excellent barrier against fine particles, splashes, and even high-pressure jets. Depending on the model, they can be used in sensitive environments such as ATEX zones or controlled environments.

Our **Weepro** and **Weejet** ranges are certified as Category III PPE.



Want to identify shoe covers that incorporate recycled materials in their composition?

LOOK FOR THE LOGO!

NEW RANGE OF SHOE COVERS

MADE FROM RECYCLED MATERIALS

Our shoe covers, **made in France**, have evolved and now incorporate a significant amount of recycled materials in their composition.

We have worked to offer you eco-designed shoe covers that guarantee the same durability and anti-slip effectiveness.

- Shoe covers 100% PP without Sole, made from 90% recycled materials
- Shoe covers PP + Sole, made with at least 60% recycled materials



CLASSIC & ECONOMIC RANGE

CPE OU PE SHOE COVERS OR BOOT COVERS

They are resistant to non-hazardous liquid splashes. They are recommended for very short-duration applications and are ideal for visitors.

RECYCLED SHOECOVER WITH SOLE SIZE XL

MADE IN FRANCE

Kolmi®



MD Class I

PPE CAT. I

RECYCLED SHOECOVER WITH SOLE SIZE XL

MADE IN FRANCE

Kolmi®



MD Class I

PPE CAT. I

- The shoe cover is made up of 60% recycled material
- Anatomical shape adapted to all types of shoes and morphologies
- Elastic band for ankle support
- Non-slip sole

REF.			G/M2		
10.041R		XL	90	Bag	1 x 400 u

SHOE COVER WITH SOLE SIZE XL

MADE IN FRANCE

Kolmi®
Skidguard



MD Class I

- Waterproof and non-slip sole 60 µm
- Ankle support elastic band
- Suitable for all body types and all types of shoes
- Recommended for long-term use

REF.			G/M2		
10.005V					1 x 200 u
10.006		XL	30	Bag	1 x 400 u
10.007					1 x 400 u

SHOE COVER WITH SOLE SIZE XXL

MADE IN FRANCE

Kolmi®
Skidguard



MD Class I

- Waterproof and non-slip sole 60 µm
- Ankle support elastic
- Very large size model
- Recommended for long-term use

REF.			G/M2		
10.007/XXL		XXL & very tall height	35	Bag	1 x 300 u

SHOE COVER WITH SOLE SIZE XXL

MADE IN FRANCE

Kolmi®
Skidguard



MD Class I

- Waterproof and non-slip sole
- Breathable & lightweight
- Elastic ankle support
- Available in different colours & sizes

REF.			G/M2		
H07101A		XXL	35	Dispenser box	1 x 300 u

SHOE COVER WITH REINFORCED SOLE SIZE XL

MADE IN FRANCE

Kolmi®
Isoguard



- With reinforced plasticized sole PE 80 µm
- Ideal for clean environments as low particle release
- For all types of shoes
- Recommended for very long-term use

REF.			G/M2		
10.005					1 x 200 u
10.008		XL	30	Bag	1 x 400 u

SHOE COVER WITH SOLE SIZE XL

MADE IN FRANCE

Kolmi®
Skidguard



MD Class I

- Waterproof and non-slip sole
- Breathable & lightweight
- Elastic ankle support
- Available in different colours & sizes

REF.			G/M2		
H06701B					1 x 400 u
H06711B		XL	30	Dispenser box	1 x 400 u
H06741B					1 x 400 u
H06751B					1 x 400 u

RECYCLED SHOECOVER WITHOUT SOLE SIZE L

MADE IN FRANCE

Kolmi®



MD Class I

PPE CAT. I

- The hydrophobic spunbond of the shoe cover is made from 90% recycled material
- Anatomical shape adapted to all types of shoes and body shapes.
- Elastic band for ankle support

REF.			G/M2		
10.001D-10		XL	30	Bag	1 x 500 u

RECYCLED SHOE COVER WITHOUT SOLE SIZE L

MADE IN FRANCE

Kolmi®



MD Class I

PPE CAT. I

- The hydrophobic spunbond of the shoe cover is made from 90% recycled material
- Anatomical shape adapted to all types of shoes and body shapes.
- Elastic band for ankle support

REF.			G/M2		
H01038A		L	30	Dispenser box	1 x 500 u

SHOE COVER WITHOUT SOLE SIZE L

MADE IN FRANCE

Kolmi®

MD Class I



- Hydrophobic polypropylene
- Ankle support elastic
- Ideal for patients in the operating room & visitors

REF.			G/M2		
H03602A		L	38	Dispenser box	1 x 500 u

SHOE COVER WITH SOLE SIZE XXL



REF.			G/M2		
10.012LONG		XXL	30	Bag	1 x 400 u

CPE SHOE COVERS



- Very economical
- Waterproof
- Very short-term use
- Ideal for visitors

REF.			M		
H10100		One size	23	Polybag	20 x 100 u

REINFORCED CPE SHOE COVERS



- Very economical
- Waterproof
- Very short-term use
- Ideal for visitors

REF.			M		
H10150		One size	31	Polybag	20 x 100 u

100% EMBOSSED POLYETHYLENE SHOE COVER



- Perfectly waterproof
- Resistant even on rough ground and outdoors
- Good mechanical resistance

REF.			G/M2		
10.110		L		Bag	1 x 400 u

POLYPROPYLENE SHOE COVER WITH CHEVRON PATTERN



- Sole with chevron pattern
- Its material in polypropylene is particularly used on smooth surfaces in dry environments

REF.			G/M2		
H10020		XL	40	Bag	1 x 500 u

OVERBOOTS WEEPRO TYPE PB 6



WeePro®

PPE CAT. III



- Sole with a strong non-slip power
- Material very slightly fluffy
- Two sizes available

REF.			G/M2		
WL-CBE/AD-LXL		L-XL	63	Polybag	15 x 20 u
WL-CBE/AD-SM		S-M			

OVERBOOTS WEEPRO TYPE PB 6



WeePro®

PPE CAT. III



- No sole
- Height 50 cm
- Material very slightly fluffy
- Elastic drawstring under the knee

REF.			G/M2		
WL-CBE/NAD-00		One size	63	Without sub-packaging	15 x 20 u

OVERBOOTS WEEJET TYPE PB 6, TYPE PB 3, TYPE PB 4



PPE CAT. III



- HDPE coating provides excellent protection against high-concentration chemicals and biological hazards
- Heat-sealed covered seams ensure impermeability to splashes under pressure and in aerosol form
- Elastic tightening under the knee and a securing tie at the calf for a secure fit
- 50 cm height to cover up to the knee, with antistatic material to dissipate electrostatic charges

REF.			G/M2		
WL-CBEJ-00		One size	90	Polybag	1 x 200 u

MICROPOROUS OVERBOOTS WITH PVC SOLE



- Great breathability
- Ultra resistant waterproof PVC sole
- Recommended for controlled environment

REF.			G/M2		
10.210		One size	43	Bag	1 x 200 u

STERILE WEEPRO LABO OVERBOOTS



PPE CAT. I

- Made from Micromium, non-linting material
- Helmke Drum cat I
- Sterile

REF.			G/M2		
WL-CBEMS-00		One size	60	Triple packed	50 x 2 u

WATERPROOF POLYETHYLENE OVERBOOTS



- Waterproof and ultra-resistant overboots
- Covers the entire boot
- Recommended for use in agri-food and protected environment

REF.			G/M2		
10.200		One size	70	Polybag	10 x 50 u

SAFEWEAR® ESD SHOECOVER WITH CONDUCTIVE STRIP



- ESD Protection: Conductive strip dissipating electrostatic charges to protect sensitive components
- Polypropylene (PP) Material: Lightweight, breathable, and dust-resistant for optimal comfort
- Ease of Use: Adjustable elastic for quick application and a secure fit
- Hygiene and Safety: Ideal for clean environments, preventing contamination from footwear

REF.			G/M2		
10.035		One size	35	Polybag	25 x 40 u

LOW WATERPROOF OVERSHOES WITH SOLE



PPE CAT. I

- Total waterproofing: made of embossed PE, tested according to the EN ISO 811 standard for water resistance under pressure
- Durability and comfort: excellent abrasion resistance (EN ISO 12947-2) and anatomical design for easy fitting, even in uncomfortable positions
- Optimal grip: slip-resistant sole effective even on wet surfaces
- Protection and support: fully covers shoes (sizes 34 to 48) with an elastic band for secure ankle support

REF.			M		
10.202		One size	400	Polybag	16 x 25 u

OVERSHOES WEEPRO TYPE PB 6



PPE CAT. III



- Sole with a strong non-slip power
- Material with very low fluffiness
- Two sizes available

REF.			G/M2		
WL-CCE/AD-LXL		L-XL	63	Polybag	20 x 20 u
WL-CCE/AD-SM		S-M			

HIGH WATERPROOF OVERBOOTS WITH SOLE



PPE CAT. I

- Total waterproofing: made of embossed PE, 100% waterproof, tested according to the EN ISO 811 standard.
- Durability and robustness: excellent abrasion resistance (EN ISO 12947-2), reinforced with 200 µm embossed PE.
- Comfort and practicality: anatomical design for easy fitting, even in uncomfortable positions.
- Optimal protection and support: covers shoes and calves (sizes 34 to 48) with two elastics ensuring secure support at the ankle and below the knee.

REF.			M		
10.204		One size	400	Polybag	8 x 25 u

POLYPROPYLENE SOCKS



- Single-use model mainly used with a more comprehensive set that needs to be decontaminated (Example: asbestos removal)
- Its large size allows it to fit many applications and body shapes

REF.			G/M2		
10.025		One size	30	Polybag	4 x 100 u

SLIPPERS WITH NON-SLIP SOLE



PPE CAT. I

- Embossed PE sole: abrasion resistance on dry and wet surfaces
- Strong welds: prevent tears during movement
- Slipper shape: ensures easy donning for the operator

REF.			G/M2		
10.030		One size		Polybag	4 x 500 u

06

PERSONAL & MEDICAL CARE

Our range and applications

96



PERSONAL & MEDICAL CARE

OUR RANGE & APPLICATIONS

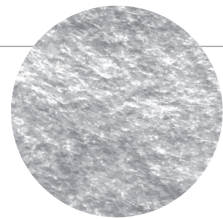
We offer a complete range of hygiene and patient care products. Whether for personal hygiene, patient comfort, or cleanliness of their environment, we provide hygiene and care products tailored for various specific uses: wash gloves, spunlace or airlaid wipes, bibs...

OUR WASH GLOVES

APPLICATION

The optimal solution for patient hygiene and personal care.

THE DIFFERENT MATERIALS:



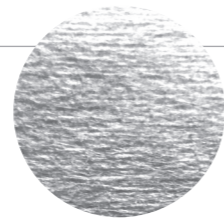
NEEDLE PUNCH 100% POLYESTER

Soft, felt-like touch
Durability and absorbency



AIRLAID + PE

Softness
Durability and absorbency
Waterproof



SPUNLACE

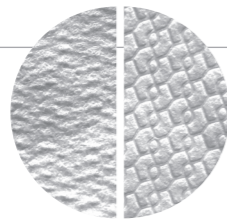
Soft textile-like feel
Durability
High absorbency

OUR WIPES

APPLICATION

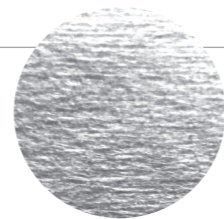
- Allows for **easy wiping** during personal hygiene and body care, without irritating the skin for **maximum softness**.
- When in contact with water, the product **does not lint or disintegrate**. It remains durable whether dry or wet.
- **Multi-use:** recommended for personal hygiene, as well as for wiping and cleaning surfaces.

THE DIFFERENT MATERIALS:



AIRLAID PLAIN OR EMBOSSED

Softness and durability in both wet and dry conditions
High absorbency



SPUNLACE

Extreme softness
Textile-like feel
High absorbency
Extreme durability

WASH GLOVE NEEDLE PUNCH 70 G/M2



- | Resistance ●●●
- | Absorption ●●●
- | Softness ●●●
- | Economical offer.
- | Available in several sizes.

REF.				
G01421		14 x 21 cm	Polybag	20 x 70 u
G01521		15 x 21 cm		20 x 50 u
G01623		16 x 23 cm		

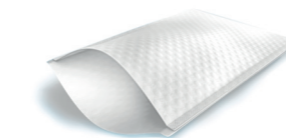
WASH GLOVE NEEDLE PUNCH 70 G/M2



- | Resistance ●●●
- | Absorption ●●●
- | Softness ●●●
- | Economical offer.
- | Available in various sizes.

REF.				
G05028		15 x 22 cm	Polybag	20 x 50 u

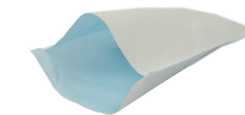
WASH GLOVE SPUNLACE HONEYCOMB 80 G/M2



- | Resistance ●●●
- | Absorption ●●●
- | Softness ●●●

REF.				
G09010		15 x 22 cm	Polybag	20 x 50 u

WASH GLOVE EMBOSSED AIRLAID + PE 70 G/M2



- | Resistance ●●●
- | Absorption ●●●
- | Softness ●●●
- | Lined with a blue waterproof PE film inside.

REF.				
G04301		15 x 23 cm	Polybag	20 x 50 u

WIPES PLAIN AIRLAID 60 G/M2

MADE IN FRANCE



- Resistance ●●●
- Absorption ●●●
- Softness ●●

REF.				
E02307	○	32 x 33 cm	Polybag	12 x 50 u

WIPES PLAIN AIRLAID 80 G/M2

MADE IN FRANCE



- Resistance ●●●
- Absorption ●●●
- Softness ●●

REF.				
F35004	○	120 x 80 cm	Polybag	1 x 50 u

WIPES SPUNLACED NONWOVEN 50% VISCOSE FIBERS / 50% POLYESTER FIBERS 60 G/M2

MADE IN FRANCE



- Resistance ●●●
- Absorption ●●●
- Softness ●●

REF.				
E09207	○	28 x 38 cm	Polybag	12 x 70 u

WIPES SPUNLACED NONWOVEN 50% VISCOSE FIBERS / 50% POLYESTER FIBERS 45 G/M2

MADE IN FRANCE



- Resistance ●●●
- Absorption ●●●
- Softness ●●

REF.				
E09213	○	28 x 38 cm	Polybag	12 x 70 u

WIPES EMBOSSED AIRLAID 50 G/M2

MADE IN FRANCE



- Resistance ●●●
- Absorption ●●●
- Softness ●●

REF.				
E01303	○	28 x 38 cm	Polybag	12 x 60 u

WIPES EMBOSSED AIRLAID 60 G/M2

MADE IN FRANCE



- Resistance ●●●
- Absorption ●●●
- Softness ●●
- Different weights, colours and dimensions.

REF.				
E03302		28 x 30 cm	Polybag	30 x 50 u
E03314	○	28 x 38 cm		12 x 50 u
F35000		49 x 45 cm		10 x 50 u

WIPES SPUNLACED NONWOVEN 45 G/M2

MADE IN FRANCE



- Resistance ●●●
- Absorption ●●●
- Softness ●●
- Different colours.

REF.				
E09225	○	28 x 38 cm	Polybag	12 x 75 u
E09227	●			

WIPES EMBOSSED AIRLAID 60 G/M2

MADE IN FRANCE



- Resistance ●●●
- Absorption ●●●
- Softness ●●
- Different weights, colours and dimensions.

REF.				
E03315	●	28 x 38 cm	Polybag	12 x 50 u
E03318	●			

ADULT BIBS PE + TISSUE 20 G/M2

MADE IN FRANCE



- Easy to install.
- Resistant and waterproof with a PE side.
- Absorbent with its wadding side.
- With collection pocket.

REF.				
5605-E		66 x 37 cm	Polybag	9 x 100 u

CHILDREN BIBS PE + TISSUE 24 G/M2

MADE IN FRANCE



- Easy to install.
- Resistant, absorbent, and waterproof.
- Available in 2 sizes.
- No pocket.

REF.				
20.909S		25 x 34,5 cm	Polybag	10 x 100 u
20.910S		30 x 42 cm		15 x 100 u

BED SHEET PP + POLYESTER 50 G/M2



- Cold protection.
- Very soft and resistant.
- Used in hospitals.

REF.				
20.5272		150 x 220 cm	Polybag	20 x 1 u



07

DISINFECTION & TECHNICAL WIPES

Our range

104



APERTURED WIPES VISCOSE/ POLYESTER 50 G/M² - 32 X 40 CM

MADE IN FRANCE



- High absorption power
- Quick drying
- Machine washable at 90° (tested up to 20 washes)
- Excellent colour fastness in washing
- "V" folding to facilitate opening before use
- Does not lint

REF.	Color	Size	Packaging	Units
20.830	White			
20.831	Blue			
20.832	Yellow	32 x 40 cm	Polybag	10 x 50 u
20.833	Pink			
20.834	Green			

APERTURED WIPES VISCOSE/ POLYESTER 80 G/M² - 35 X 40 CM

MADE IN FRANCE



- High absorption power
- Quick drying
- Machine washable at 90° (tested up to 20 washes)
- Excellent colour resistance to washing
- "V" folding for easy opening before use
- Does not fluff

REF.	Color	Size	Packaging	Units
20.860	White			
20.861	Blue			
20.862	Yellow	35 x 40 cm	Polybag	12 x 25 u
20.863	Pink			
20.864	Green			

APERTURED WIPES VISCOSE/ POLYESTER 80 G/M² - 35 X 50 CM

MADE IN FRANCE



- High absorption power
- Quick drying
- Machine washable at 90° (tested up to 20 washes)
- Excellent colour resistance to washing
- "V" folding for easy opening before use
- Does not lint

REF.	Color	Size	Packaging	Units
20.881	Blue			
20.882	Yellow			
20.883	Pink	35 x 50 cm	Polybag	6 x 25 u
20.884	Green			
20.885	White			

APERTURED WIPES VISCOSE/ POLYESTER 80 G/M² - 32 X 50 CM

MADE IN FRANCE



- High absorption power
- Quick drying
- Machine washable at 90° (tested up to 15 washes)
- Excellent colour resistance to washing
- "V" folding for easy opening before use
- Does not lint

REF.	Color	Size	Packaging	Units
20.891	Blue			
20.892	Yellow			
20.893	Pink	32 x 50 cm	Polybag	6 x 25 u
20.894	Green			
20.895	White			

WIPING FORMAT CELLULOSE/ POLYPROPYLENE 65 G/M² - DISPENSER BOX



Wee Téh' White

- Low releasing, does not scratch
- High absorption capacity
- Very strong and elastic
- Resistant to acids and solvents

REF.	Color	Size	Packaging	Units
WT-W-04	White	38 x 30 cm	Without sub-packaging	1 x 390 u

WIPING FORMAT CELLULOSE/ POLYPROPYLENE 65 G/M² - DISPENSER BOX



Wee Téh' White

- Low release, does not scratch
- High absorption capacity
- Very strong and elastic
- Resistant to acids and solvents

REF.	Color	Size	Packaging	Units
WT-W-01	White	42 x 35 cm	Without sub-packaging	1 x 260 u

WIPING FORMAT CELLULOSE/ POLYPROPYLENE 65 G/M² - POLYBAG

Wee Téh' Blue



- Little releasing, does not scratch
- Great absorption capacity
- Strong and elastic
- Resistant to acids and solvents

REF.	Color	Size	Packaging	Units
WT-B-05	Blue	38 x 30 cm	Polybag	10 x 44 u

WIPING FORMAT CELLULOSE/ POLYPROPYLENE 68 G/M² - BAG

Wee Téh' E-tra



- Low releasing, does not scratch
- High absorption capacity
- Resistant to bases and solvents

REF.	Color	Size	Packaging	Units
WT-E-02	White	33 x 60 cm	Polybag	14 x 50 u

WIPING FORMAT CELLULOSE/ POLYESTER 55 G/M² - DISPENSER BOX



- Low lint, non-abrasive
- High absorption capacity
- Resistant to acids and solvents

REF.				
WT-L-01	38 x 30 cm	Reel		1 x 300 u

WIPING FORMAT CELLULOSE/ POLYESTER 55 G/M² - POLYBAG



- Low release, does not scratch
- High absorption capacity
- Resistant to acids and solvents

REF.				
WT-L-02	38 x 30 cm	Polybag		10 x 50 u

WIPING FORMAT CELLULOSE/ POLYESTER 75 G/M²



- Little release, does not scratch
- High absorption capacity
- Resistant to acids and solvents

REF.				
WT-F-02	38 x 30 cm	Without sub-packaging		10 x 50 u

WIPING FORMAT CELLULOSE/ POLYESTER 75 G/M² - REEL



- Low release, does not scratch
- High absorption capacity
- Resistant to acids and solvents

REF.				
WT-F-03	38 x 30 cm	Reel		2 x 500 u

WIPING FORMAT CELLULOSE/ POLYESTER 55 G/M² - REEL



- Little releasing, does not scratch
- High absorption capacity
- Resistant to acids and solvents

REF.				
WT-L-03	38 x 30 cm	Reel		2 x 500 u

WIPING FORMAT CELLULOSE/ POLYESTER 75 G/M² - DISPENSER BOX



- Low release, does not scratch
- High absorption capacity
- Resistant to bases and solvents

REF.				
WT-FS-01	38 x 30 cm	Dispenser box		1 x 200 u

WIPING FORMAT 100 % VISCOSE - REEL



- Flexible & soft, not very linty
- Does not scratch
- For dry & wet use
- High absorption capacity
- Resistant to bases & solvents
- Good elasticity
- Suitable for food contact

REF.				
20.856-20	60 x 30 cm	Rolls		1 x 330 u

WIPING FORMAT 100 % VISCOSE 70 G/M² - REEL



- Low releasing, does not scratch
- High absorption capacity
- Resistant to acids and solvents

REF.				
WT-WUP-01-150	20 x 30 cm	Rolls		1 x 150 u

WIPING FORMAT 100 % POLYPROPYLENE 70 G/M² - REEL



- Water and oil absorption
- Does not scratch, does not fade
- Non-releasing

REF.				
WT-M-03		38 x 30 cm	Without sub-packaging	1 u

WIPING FORMAT VISCOSE/POLYESTER 72 G/M² - REEL



- Little releasing, does not scratch
- Great absorption capacity
- Resistant to acids and solvents

REF.				
WT-U-03		38 x 30 cm	Without sub-packaging	1 x 500 u

ECO-REFILL FOR DISINFECTING WIPES

MADE IN FRANCE



- Eco-refill compatible with our reference 90.104C
- Ideal for reducing jerry cans consumption
- Bactericidal, fungicidal, virucidal & yeasticidal
- 200 eco-refills of 20 x 20 formats
- Compliant with Biocide Regulation (EU) No 528/2012: PT1/PT2/PT4

REF.				
90.104R		20 x 20 cm	Eco-refill	9 x 200 u

WIPING FORMAT CELLULOSE/POLYPROPYLENE 65 G/M² - REEL



- Low releasing, does not scratch
- Great absorption capacity
- Strong and elastic
- Resistant to acids and solvents

REF.				
WT-B-04-390		38 x 30 cm	Reel	1 x 390 u

WIPING FORMAT VISCOSE/POLYESTER 40 G/M² - REEL



- Little releasing, does not scratch
- Great absorption capacity
- Flexible and soft
- Resistant to bases and solvents

REF.				
WT-P-01		38 x 30 cm	Reel	1 x 300 u

DISINFECTING WIPES - TP1 / TP2 / TP4

MADE IN FRANCE



- Non-rinse and ready-to-use
- 99.9% disinfection based on ethanol
- Bactericidal, fungicidal, virucidal & yeasticidal
- Compliant with Biocide Regulation (EU) No 528/2012: PT1/PT2/PT4

REF.				
90.104C		20 x 20 cm	Cans	6 x 200 u
90.106C		13 x 18 cm		12 x 100 u

08

KITS & ACCESSORIES

Our range

112



UNDERWEAR KIT 100% PP



- ▮ Suitable for large environments such as airlocks and decontamination showers
- ▮ - Loose-fitting PP T-shirt
- ▮ - PP Boxer shorts
- ▮ - Pair of PP socks

REF.			
20.811		sachet	100 x 1u

KIT VISITOR



- ▮ Suitable for visitors in business or in the kitchen
- ▮ Economical and easy to use
- ▮ - 1 x PE gown
- ▮ - 1 x 2-ply paper mask
- ▮ - 1 x hair cap
- ▮ - 1 x pair of CPE shoe covers

REF.			
50.701		sachet	100 x 1u

KIT OVEN



- ▮ Suitable for stripping gas or electric ovens, rotisseries, grills, pianos, fryers, hotplates, and hoods
- ▮ - 1 x Reusable half-mask in TPE
- ▮ - 2 x Filter cartridges with A2P3 protection
- ▮ - 1 x Pair of anti-fog goggle mask with polycarbonate lens

REF.		
50.702-RHF	Cardboard	1 x 1u

QUALITATIVE FIT TEST KIT



REF.		
QLFT-K02	Cardboard	1 x 5u

ASBESTOS KIT



- ▮ Includes all the necessary equipment for short-term interventions in the presence of asbestos. Contains:
- ▮ 1 x Hooded coverall Type 5/6 - WeeCover Max 1
- ▮ 1 x FFP3 mask Kolmi Oxygen
- ▮ 1 x Pair of green Ultranitril gloves
- ▮ 1 x Pair of protective goggles
- ▮ 1 x Asbestos adhesive tape roll
- ▮ 2 x Collection bags
- ▮ 1 x Pair of overboots

REF.			
WA-KAI1-03	L	sachet	10 x 1u
WA-KAI1-04	XL		
WA-KAI1-05	XXL		

ASBESTOS KIT



- ▮ Includes all the necessary equipment for short-term interventions in the presence of asbestos. Contains:
- ▮ 1 x Hooded coverall Type 5/6 - WeeCover Max 1
- ▮ 1 x FFP3 mask Kolmi Oxygen
- ▮ 1 x Pair of yellow latex gloves
- ▮ 1 x Pair of protective goggles
- ▮ 1 x Asbestos adhesive tape roll
- ▮ 2 x Collection bag
- ▮ 1 x Pair of overboots

REF.			
WA-KAN2-03	L	sachet	10 x 1u
WA-KAN2-04	XL		
WA-KAN2-05	XXL		

ASBESTOS KIT



- ▮ Includes all the necessary equipment for short-term interventions in the presence of asbestos. Contains:
- ▮ 1 x Hooded coverall Type 5/6 - WeeCover Max 1
- ▮ 1 x FFP3 mask Kolmi Oxygen
- ▮ 1 x Pair of yellow latex gloves
- ▮ 1 x Pair of protective goggles
- ▮ 1 x Asbestos adhesive tape roll
- ▮ 1 x Collection bag
- ▮ 1 x Pair of overboots

REF.			
WA-KAN-03	L	sachet	10 x 1u
WA-KAN-04	XL		
WA-KAN-05	XXL		

STAINLESS STEEL WALL DISPENSER - NITRILE, VINYL, LATEX GLOVES

MADE IN FRANCE



- ▮ Compliant with the HACCP approach.
- ▮ Suitable for all brands.
- ▮ Easy to clean.
- ▮ Very easy to handle gloves.
- ▮ Capacity : 1 box of 100 gloves

REF.			
20.B1035		Cardboard	1 x 1u

UNIVERSAL STAINLESS STEEL WALL DISPENSER - ALL PRODUCTS

MADE IN FRANCE



- Compliant with the HACCP approach.
- Suitable for all brands.
- Easy to clean.
- Very easy to handle.

REF.			
20.B1050		Cardboard	1 x 1u

STAINLESS STEEL WALL DISPENSER - VISITOR KIT

MADE IN FRANCE



- Compliant with the HACCP approach.
- Suitable for all brands.
- Easy to clean.
- Very easy to handle.

REF.			
20.B1060		Cardboard	1 x 1u

INOX GLOVE DISPENSER - 4 BOXES

MADE IN FRANCE



- HACCP-compliant.
- Universal: suitable for all brands.
- Gloves are easy to grip.
- Wall mounting (screws and plugs supplied).
- Magnetic attachment (to be added).

REF.			
20.B957440		Cardboard	1 x 1u

STAINLESS STEEL WALL DISPENSER - PE APRONS ON ROLLS

MADE IN FRANCE



- Compliant with the HACCP approach.
- Suitable for all brands.
- Easy to clean.
- Very easy to handle.

REF.			
20.B1080		Cardboard	1 x 1u

INOX GLOVE DISPENSER - 3 BOXES

MADE IN FRANCE



- HACCP-compliant.
- Universal: suitable for all brands.
- Gloves are easy to grip.
- Wall mounting (screws and plugs supplied).
- Magnetic attachment (to be added).

REF.			
20.B957330		Cardboard	1 x 1u

CATALOGUE



MEDICOM SAS

+33 (0)241 963 434

Boulevard de la Chanterie
49124 Saint-Barthélemy-d'Anjou
FRANCE

sales.support.pro.eu@medicom.com

www.medicom-eu.com



MEDICOM GMBH

+49-2171-706670

Benzstraße 1c
Leverkusen 51381
GERMANY

ТОВ «МЕДІКОМ-УКРАЇНА»

+38 (0)44 303 99 43

03115, Україна, м. Київ,
вул. Серпова, 11
УКРАЇНА

